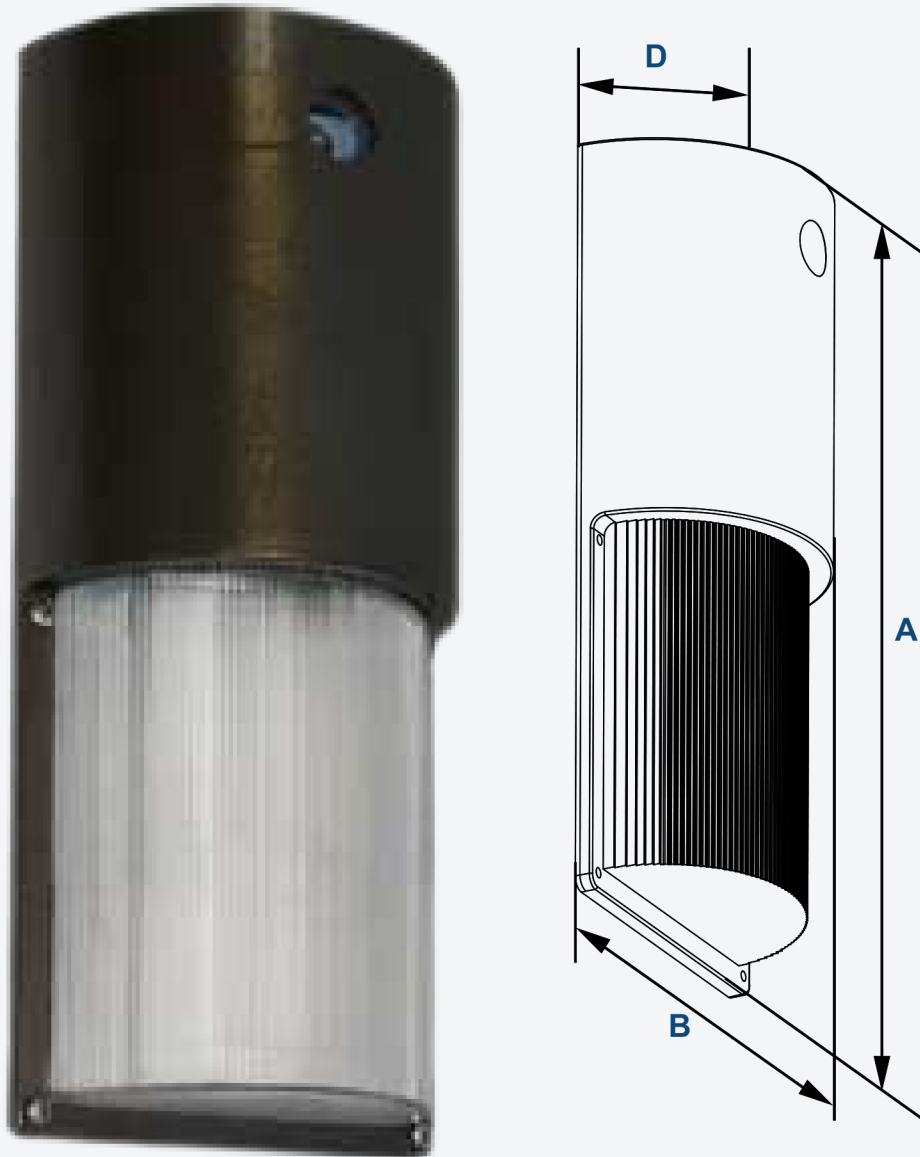


SHOB 9 Mounted at 10'

Emits > 1fc 10' Across and 6' Out



This photometric report will be generated using methods recommended by the Illuminating Engineering Society of North America (IESNA). The calculations in this report will be based on data provided by a third party. The accuracy of this photometric report is dependent on the accuracy of the data provided. Enduser environment and application (including, but not limited to voltage variation and dirt accumulation) can cause actual photometric performance to differ from the performance calculated using the data provided. This report will be provided without warranty as to accuracy, completeness, reliability, or otherwise. In no event will Access Fixtures be responsible for any loss resulting from any use of this report.

Access Fixtures 40 Jackson

St. Worcester, MA

Operator

Telephone 800-468-9925

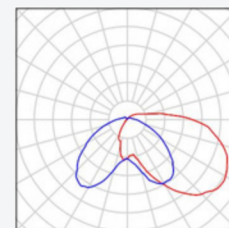
Fax

e-mail

Sales@AccessFixtures.com

SHOB 9 10' / Luminaire parts list

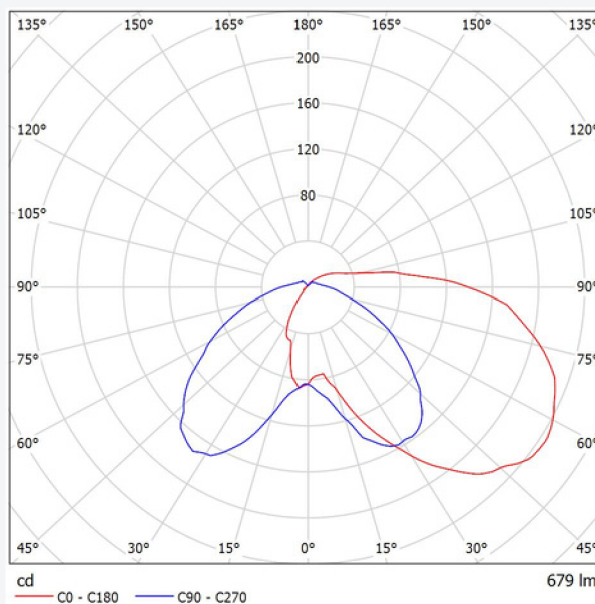
1 Pieces Access Fixtures SHOO 9 AF33XWP9QF1X7U5K See our luminaire catalog for an image of the luminaire.
 SHOB 9 AF33XWP9 WITH ONE 7W LED ARRAY
 Article No.: SHOB 9 AF33XWP9QF1X7U5K
 Luminous flux (Luminaire): 679 lm
 Luminous flux (Lamps): 679 lm
 Luminaire Wattage: 8.9 W
 Luminaire classification according to CIE: 87
 CIE flux code: 29 60 84 87 100
 Fitting: 1 x 21 SAMSUNG 561B LEDs (Correction Factor 1.000).



ARRAY / Luminaire Data Sheet

See our luminaire catalog for an image of the luminaire.

Luminous emittance 1:



Luminaire classification according to CIE: 87
 CIE flux code: 29 60 84 87 100

Due to missing symmetry properties, no UGR table can be displayed for this luminaire.

Access Fixtures 40 Jackson

St. Worcester, MA

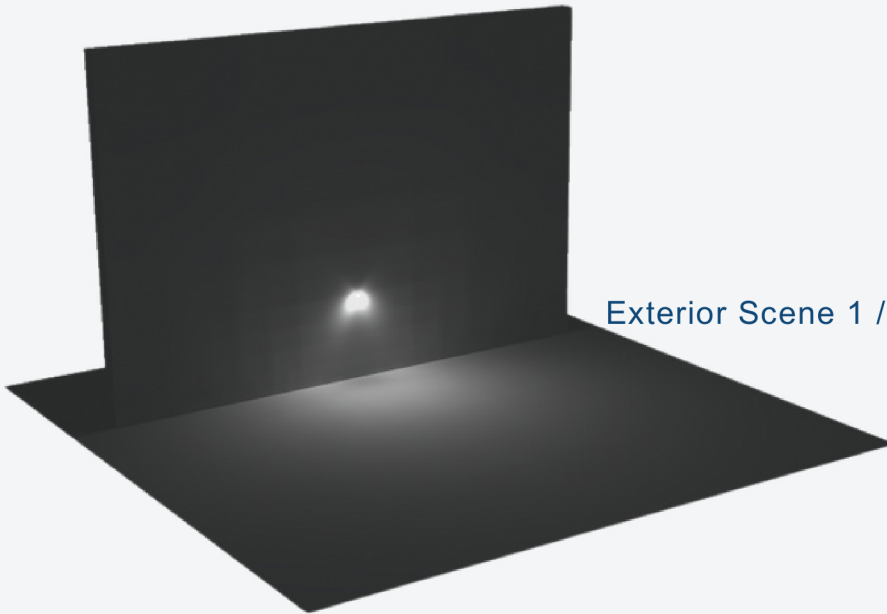
Operator

Telephone 800-468-9925

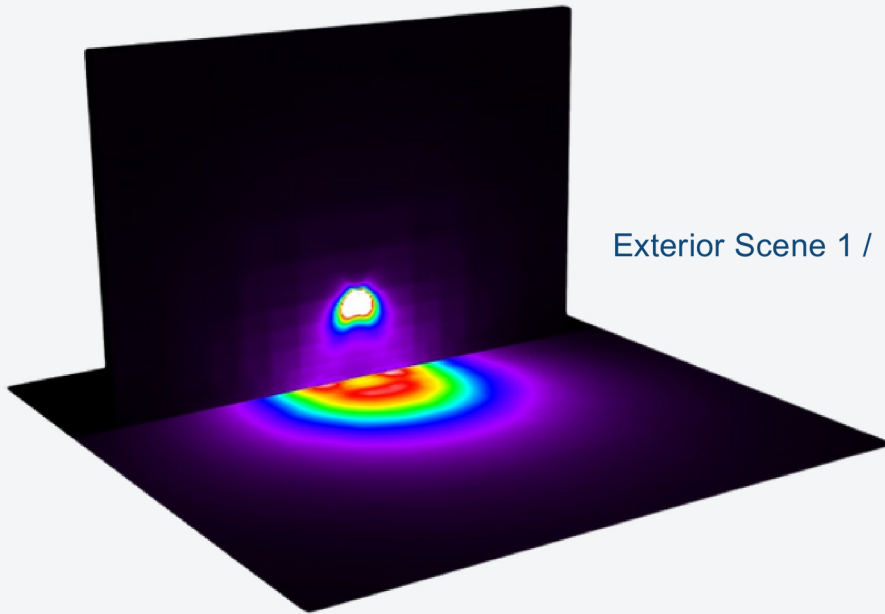
Fax

e-mail

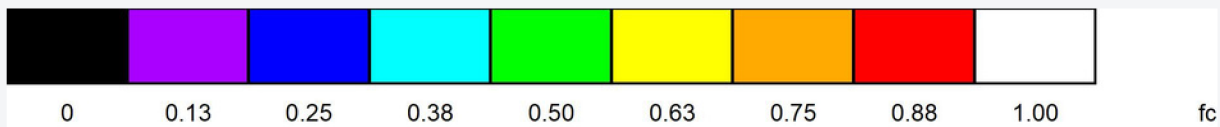
Sales@AccessFixtures.com



Exterior Scene 1 / 3D Rendering



Exterior Scene 1 / False Color Rendering



Access Fixtures 40 Jackson

St. Worcester, MA

Operator

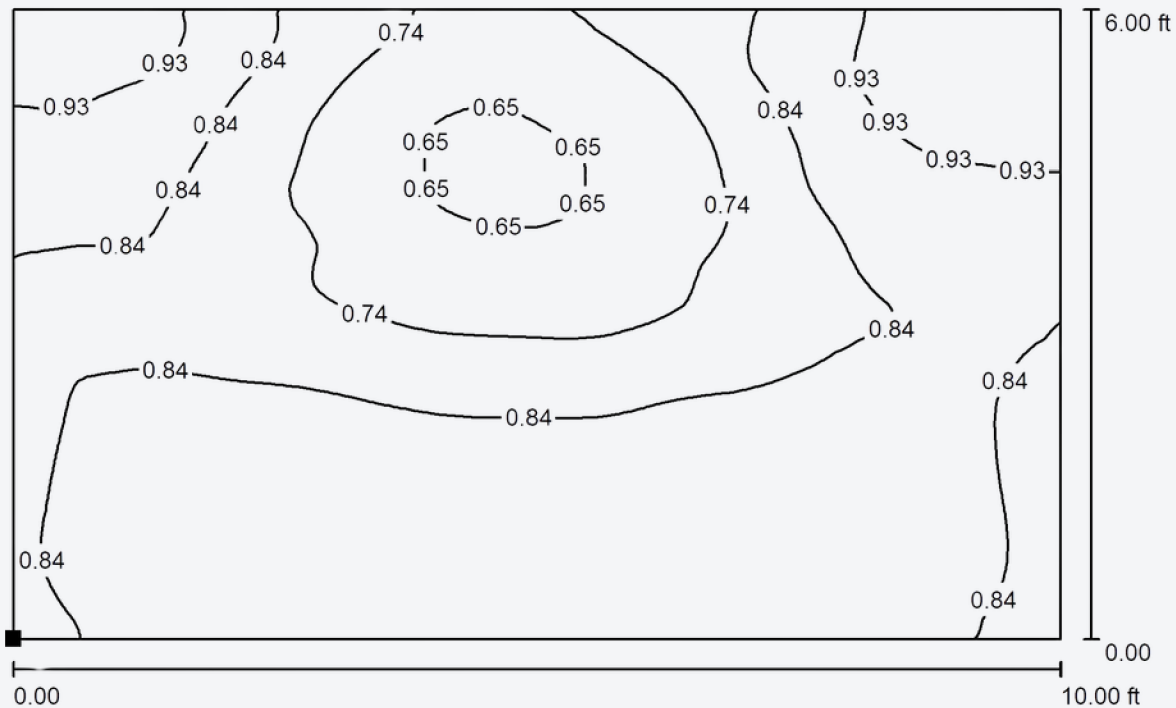
Telephone 800-468-9925

Fax

e-mail

Sales@AccessFixtures.com

Exterior Scene 1 / Calculation Surface / Isolines (E, Perpendicular)



Values in Footcandles, Scale 1 : 22

Position of surface in external scene:
Marked point: (20.000 ft, 34.000 ft,
0.000 ft)



Grid: 128 x 128 Points

E_{av} [fc]
0.83

E_{min} [fc]
0.62

E_{max} [fc]
0.99

u_0
0.748

E_{min} / E_{max}
0.630

Access Fixtures 40 Jackson

St. Worcester, MA

Operator

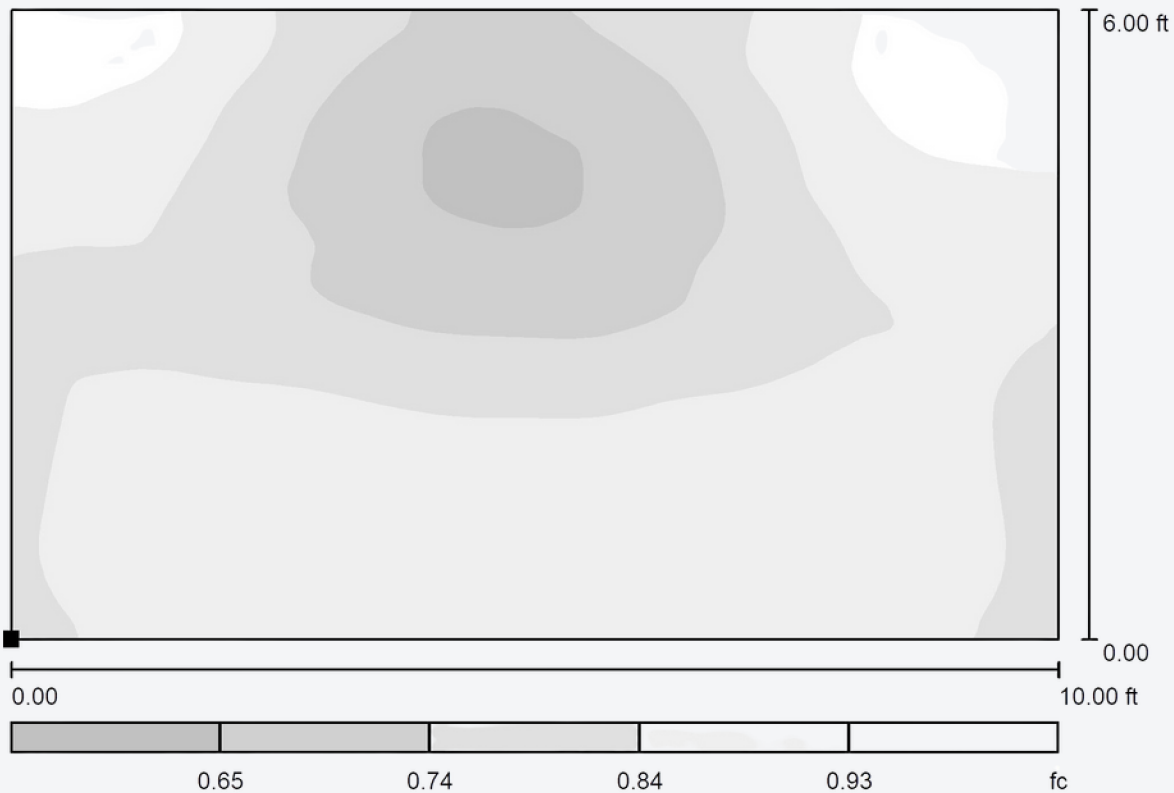
Telephone 800-468-9925

Fax

e-mail

Sales@AccessFixtures.com

Exterior Scene 1 / Calculation Surface / Greyscale (E, Perpendicular)



Scale 1 : 22

Position of surface in external scene:
Marked point: (20.000 ft, 34.000 ft,
0.000 ft)



Grid: 128 x 128 Points

E_{av} [fc]
0.83

E_{min} [fc]
0.62

E_{max} [fc]
0.99

u_0
0.748

E_{min} / E_{max}
0.630

Access Fixtures 40 Jackson

St. Worcester, MA

Operator

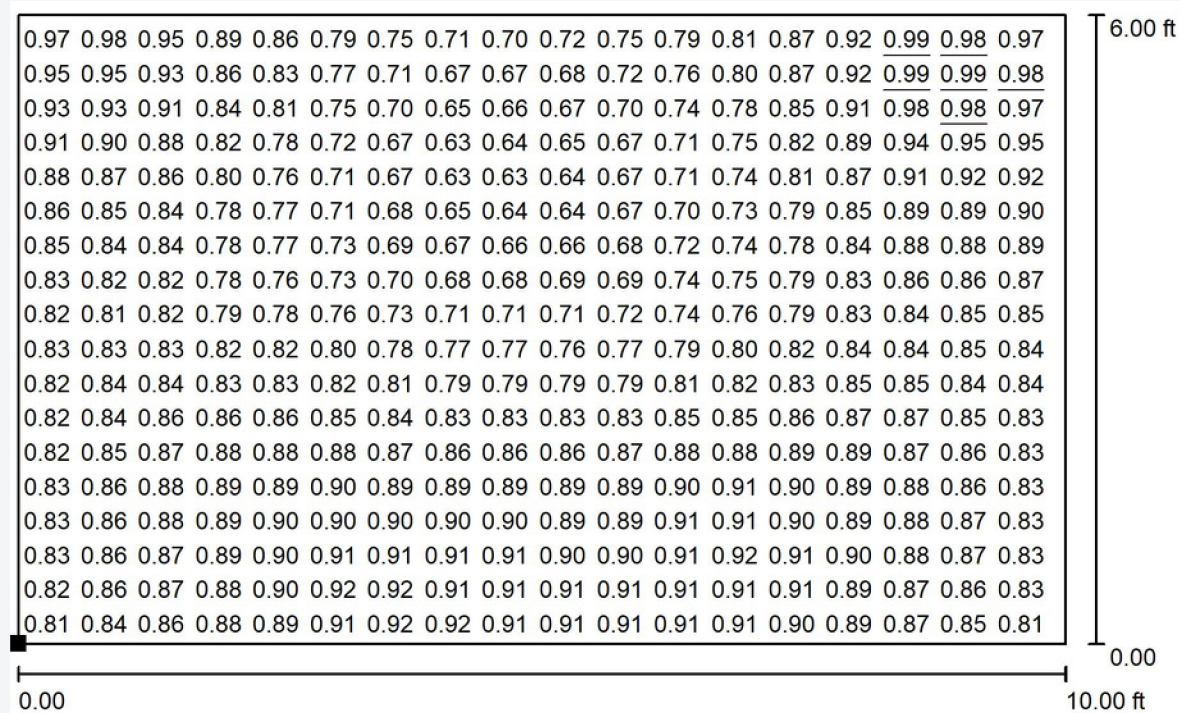
Telephone 800-468-9925

Fax

e-mail

Sales@AccessFixtures.com

Exterior Scene 1 / Calculation Surface / Value Chart (E, Perpendicular)



Values in Footcandles, Scale 1 : 22

Not all calculated values could be displayed.

Position of surface in external scene:

Marked point:

(20.000 ft, 34.000 ft, 0.000 ft)



Grid: 128 x 128 Points

E_{av} [fc]
0.83

E_{min} [fc]
0.62

E_{max} [fc]
0.99

u_0
0.748

E_{min} / E_{max}
0.630