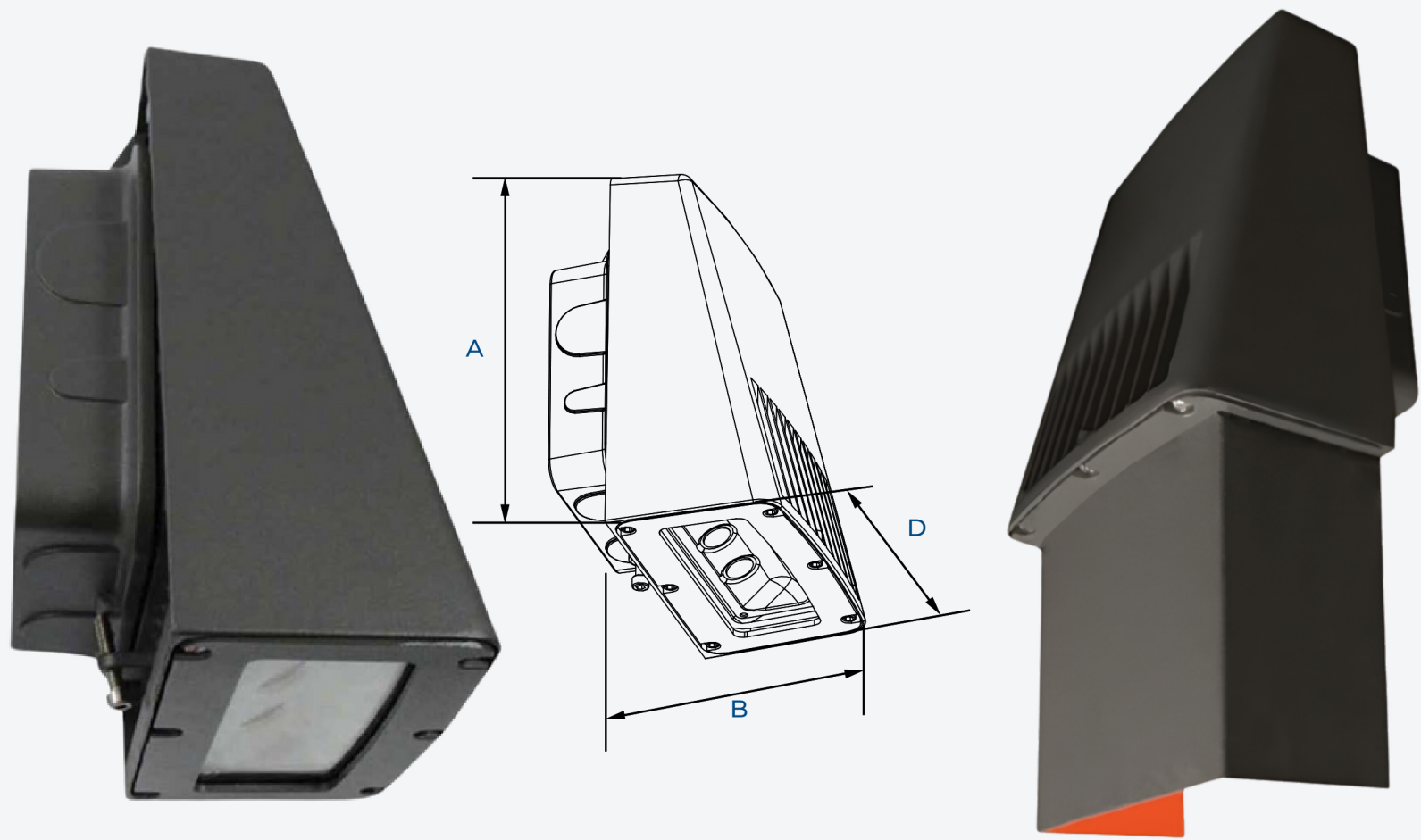


# VERS 43 Mounted at 10'

Emits > 1fc 32' Across and 17' Out



This photometric report will be generated using methods recommended by the Illuminating Engineering Society of North America (IESNA). The calculations in this report will be based on data provided by a third party. The accuracy of this photometric report is dependent on the accuracy of the data provided. Enduser environment and application (including, but not limited to voltage variation and dirt accumulation) can cause actual photometric performance to differ from the performance calculated using the data provided. This report will be provided without warranty as to accuracy, completeness, reliability, or otherwise. In no event will Access Fixtures be responsible for any loss resulting from any use of this report.

Access Fixtures 40 Jackson

St. Worcester, MA

Operator

Telephone 800-468-9925

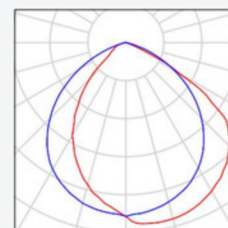
Fax

e-mail

Sales@AccessFixtures.com

## VERS 43 10' / Luminaire parts list

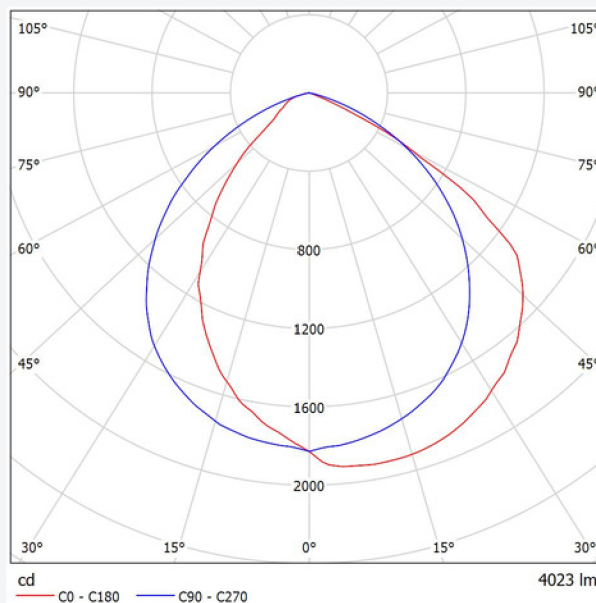
1 Pieces Access Fixtures VERS 43 AF33XTV2C32X20U41K See our luminaire catalog for an image of the luminaire.  
 AF33XTV2C3 with two 20W LED COBS  
 Article No.: VERS 43 AF33XTV2C32X20U41K  
 Luminous flux (Luminaire): 4023 lm  
 Luminous flux (Lamps): 4023 lm  
 Luminaire Wattage: 41.7 W  
 Luminaire classification according to CIE: 100  
 CIE flux code: 58 91 99 100 100 Fitting: 1 x User defined (Correction Factor 1.000).



## AF33XTV2C32X20U41K TV2C3 with two 20w LED COBS / Luminaire Data Sheet

Luminous emittance 1:

See our luminaire catalog for an image of the luminaire.



Luminaire classification according to CIE: 100  
 CIE flux code: 58 91 99 100 100

Due to missing symmetry properties, no UGR table can be displayed for this luminaire.

Access Fixtures 40 Jackson

St. Worcester, MA

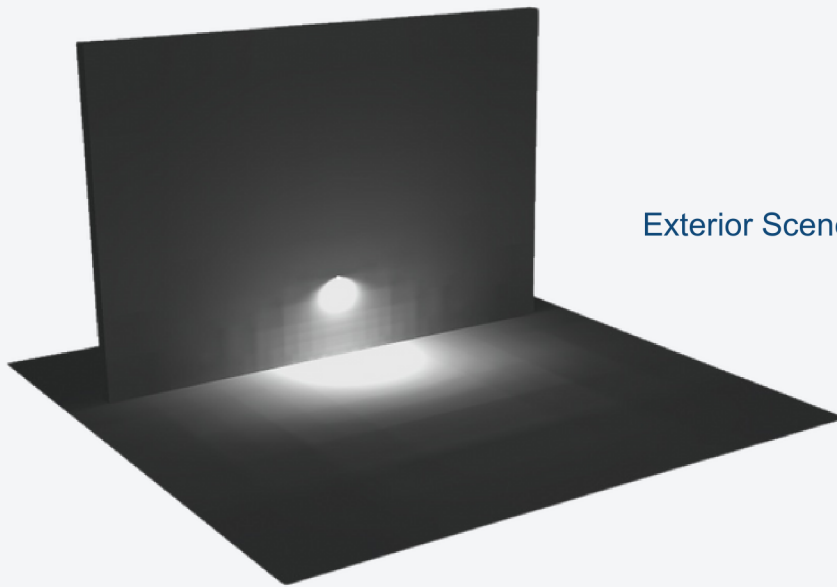
Operator

Telephone 800-468-9925

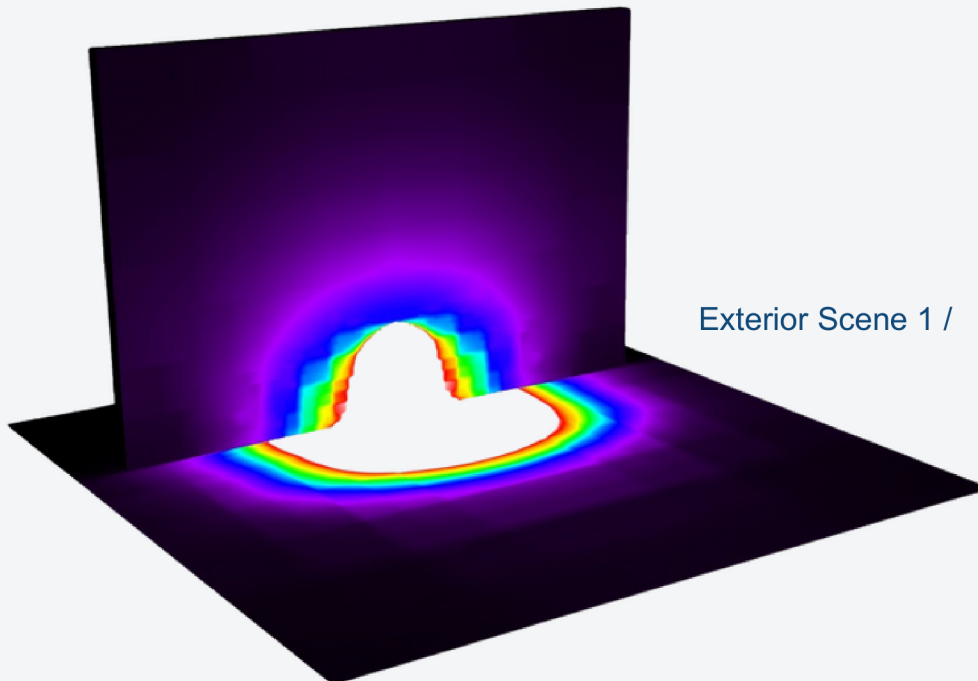
Fax

e-mail

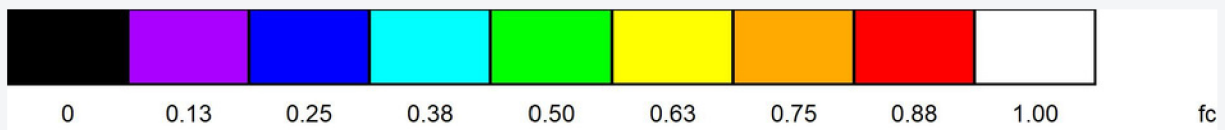
Sales@AccessFixtures.com



Exterior Scene 1 / 3D Rendering



Exterior Scene 1 / False Color Rendering



Access Fixtures 40 Jackson

St. Worcester, MA

Operator

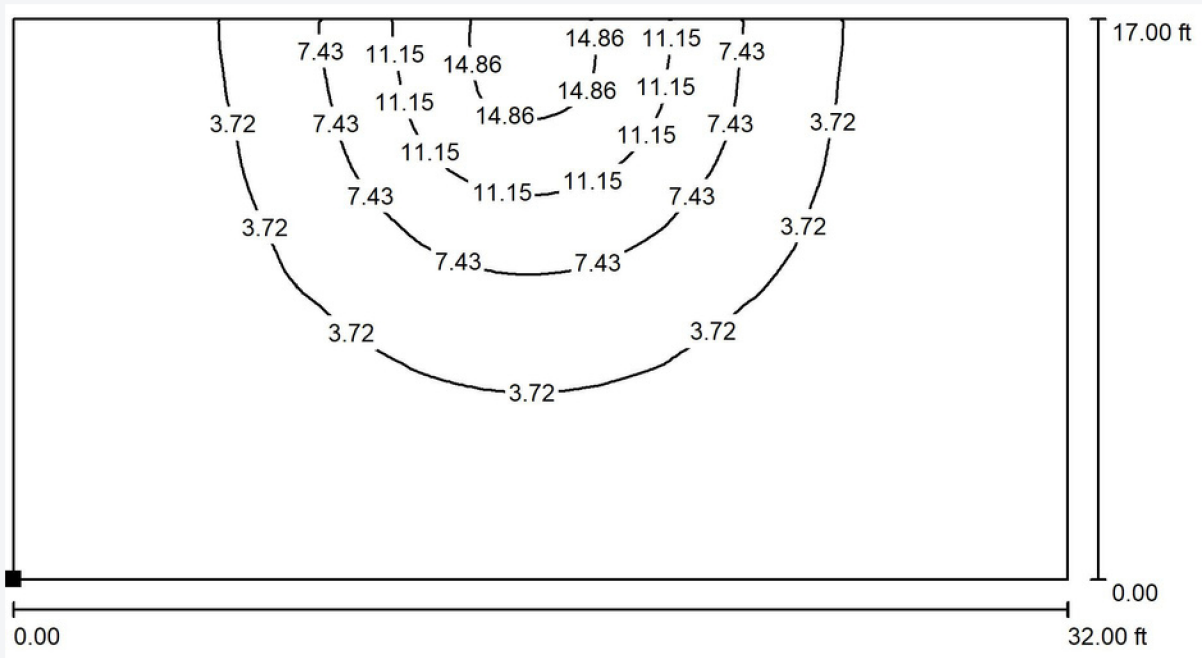
Telephone 800-468-9925

Fax

e-mail

Sales@AccessFixtures.com

**Exterior Scene 1 / Calculation Surface / Isolines (E, Perpendicular)**



Values in Footcandles, Scale 1 : 70

Position of surface in external scene:  
Marked point: (9.250 ft, 23.000 ft,  
0.000 ft)



Grid: 128 x 128 Points

$E_{av}$  [fc]  
3.64

$E_{min}$  [fc]  
0.25

$E_{max}$  [fc]  
17

$u_0$   
0.068

$E_{min} / E_{max}$   
0.015

Access Fixtures 40 Jackson

St. Worcester, MA

Operator

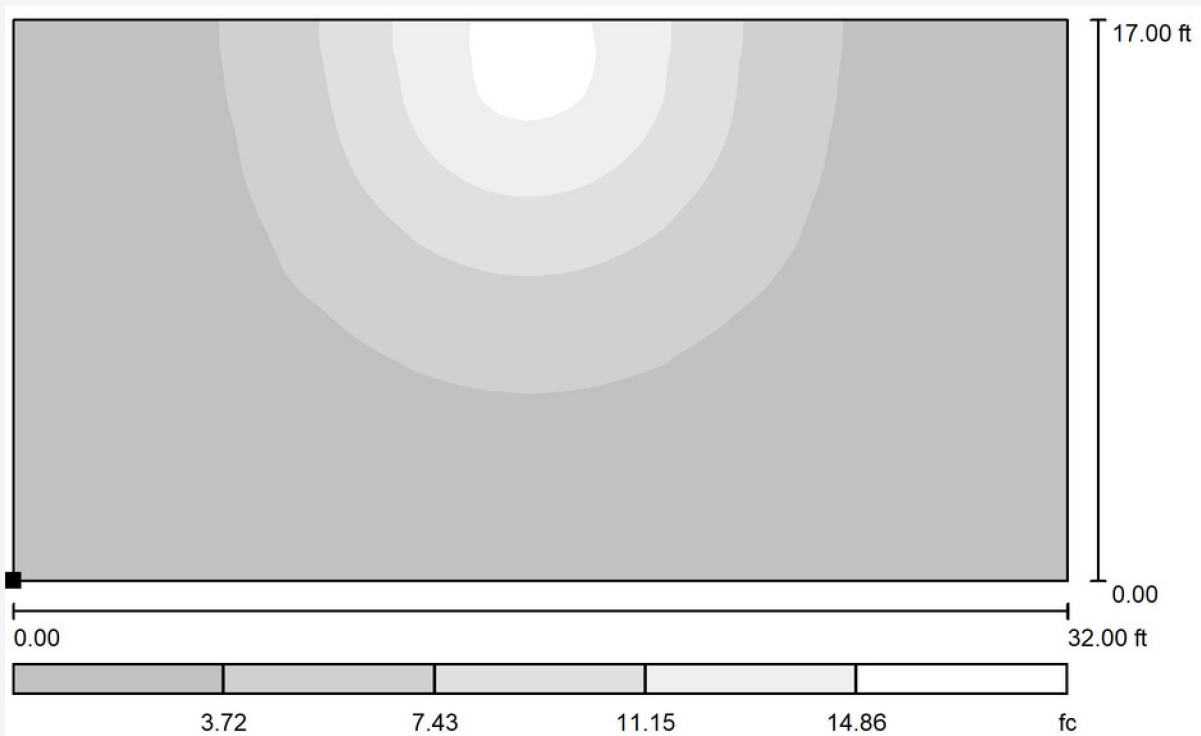
Telephone 800-468-9925

Fax

e-mail

Sales@AccessFixtures.com

**Exterior Scene 1 / Calculation Surface / Greyscale (E, Perpendicular)**



Scale 1 : 70

Position of surface in external scene:  
Marked point: (9.250 ft, 23.000 ft,  
0.000 ft)



Grid: 128 x 128 Points

$E_{av}$  [fc]  
3.64

$E_{min}$  [fc]  
0.25

$E_{max}$  [fc]  
17

$u_0$   
0.068

$E_{min} / E_{max}$   
0.015



Access Fixtures 40 Jackson

St. Worcester, MA

Operator

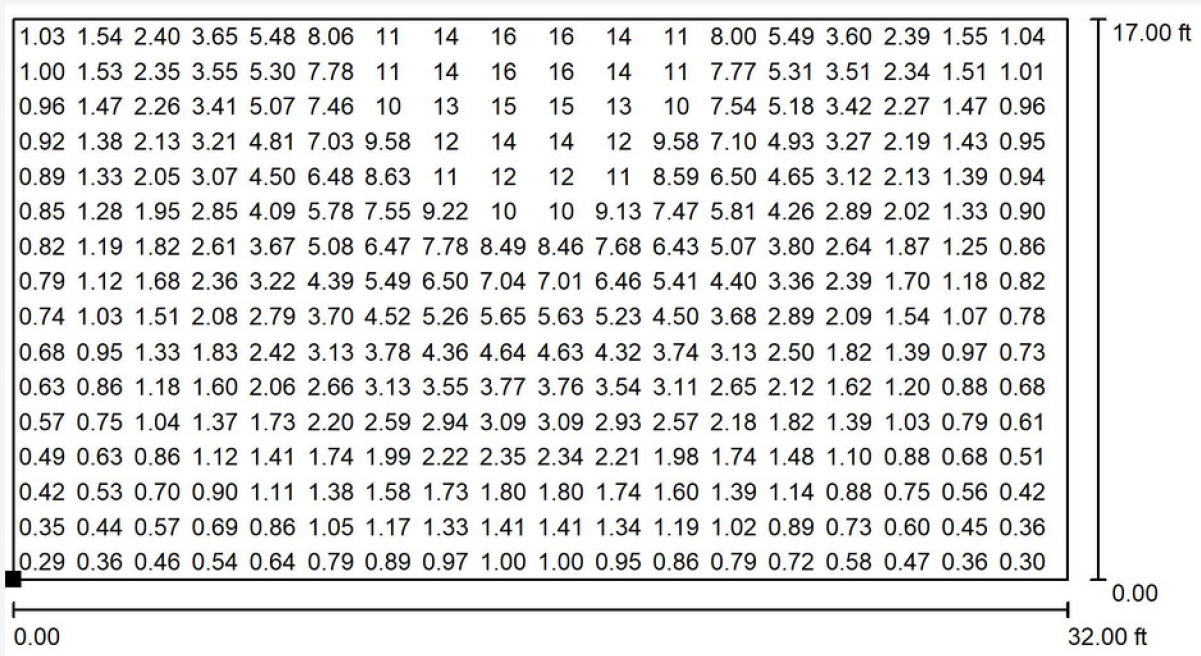
Telephone 800-468-9925

Fax

e-mail

Sales@AccessFixtures.com

## Exterior Scene 1 / Calculation Surface / Value Chart (E, Perpendicular)



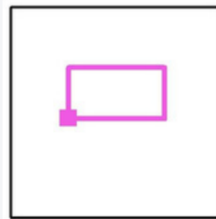
Values in Footcandles, Scale 1 : 70

Not all calculated values could be displayed.

Position of surface in external scene:

Marked point:

(9.250 ft, 23.000 ft, 0.000 ft)



Grid: 128 x 128 Points

$E_{av}$  [fc]  
3.64

$E_{min}$  [fc]  
0.25

$E_{max}$  [fc]  
17

$u_0$   
0.068

$E_{min} / E_{max}$   
0.015