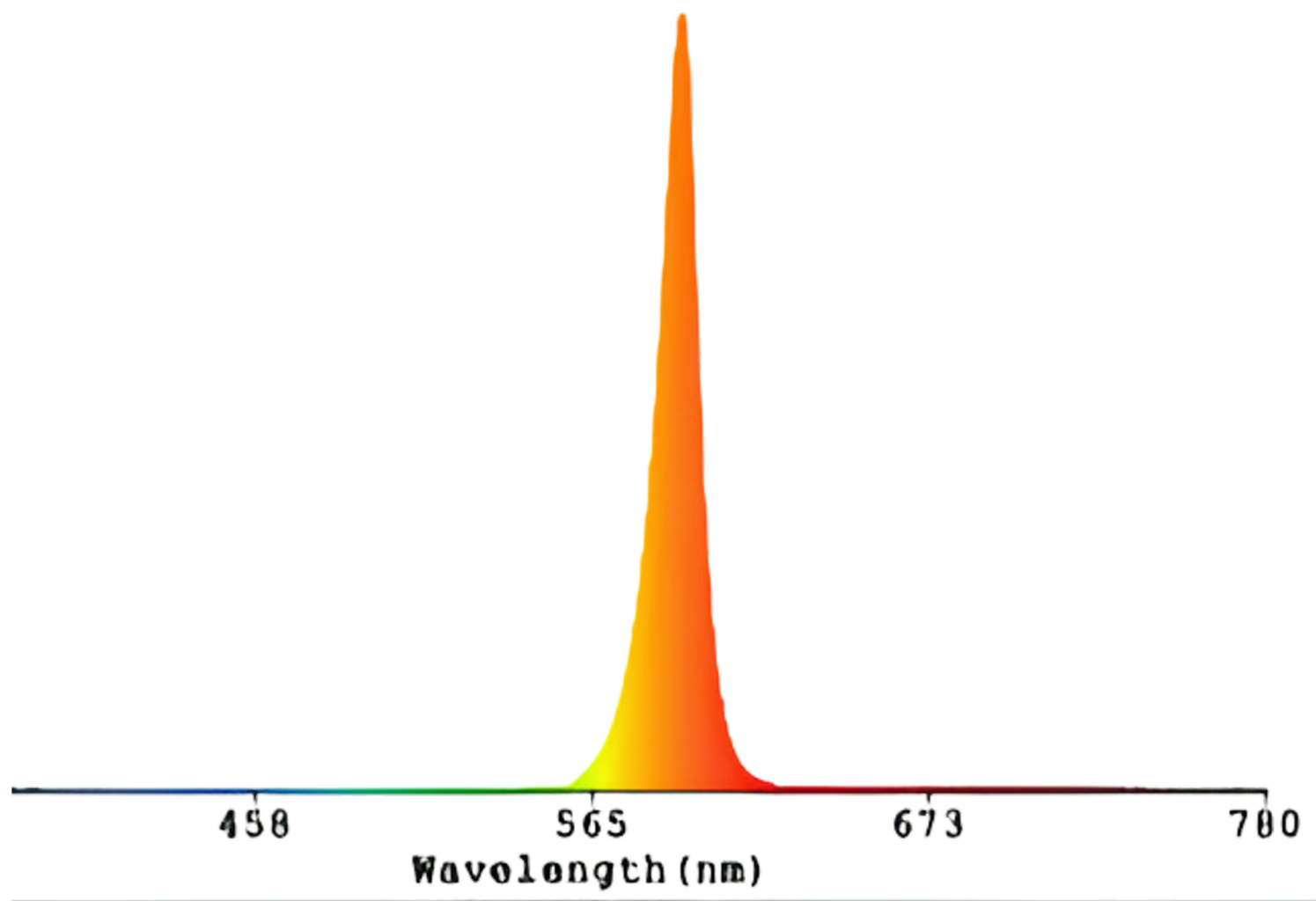


UPTA / EPTA

590nm AMBER SPECTRUM



590nm amber matches the typical spectrum of "gold tube and filter technology"

NO UV UPTA FIXTURE



■ L70@200,000hrs - Exceptional heat sink design produces an EXTREME-LIFE for years of virtually maintenance-free performance.

Flawless Light: Choice of advanced Optics, Kelvin and Color rendering of up to Ra>90 facilities premium anti-glare illumination.

ETL, CUL, DCC, CE, CB, SAA, IK10 AND IP66 listed and certified.

NO UV EPTA FIXTURE



■ Low weight with Three option for mounts- Surface mounted, Suspension mounted, and Knuckle mounted.

1000hr salt Spray certified and extended aluminum housing for maximum life and durability.

Marine-grade finish to protect against extreme environments where there is harsh environments where chemicals are being used or coastal areas with high amounts of salt.



Tested at 160w

UPTA / EPTA 160 590NM AMBER- FIXTURE TEST REPORT - CLEAR GLASS LENS



Floodlight Summary:

Report based on lamp delivering 1000 lumens.

Maximum Intensity (Luminaire orientation as tested.)	344.9 cd per klm. 0.0 degrees vertical 0.0 degrees horizontal
---	---

Beam Spread	At 10% of Imax	156.8V x 155.0H
	At 50% of Imax	117.4V x 114.4H
	At 90% of Imax	52.0V x 50.2H

Beam Flux	Total	999.9 lumens per klm.
	To 10% of Imax	985.5 lumens per klm.
	To 50% of Imax	779.7 lumens per klm.
	To 90% of Imax	205.2 lumens per klm.

Upward LOR	0.0 %
Downward LOR	100.0 %

Luminaire Efficiency(Light Output Ratio)	100.0 %
--	---------

Light Output Ratio:	100.0%
Luminaire Power:	155.2 W
90% Beam Spread	52.0V x 50.2H
50% Beam Lumens	779.7 lumens per klm.

H(□) Range:-90 - 90DEG
H(□) Interval:1.0DEG Test
Speed: HIGH
Temperature:25.3DEG
Operators:Guohong
Test Date:2024-01-02

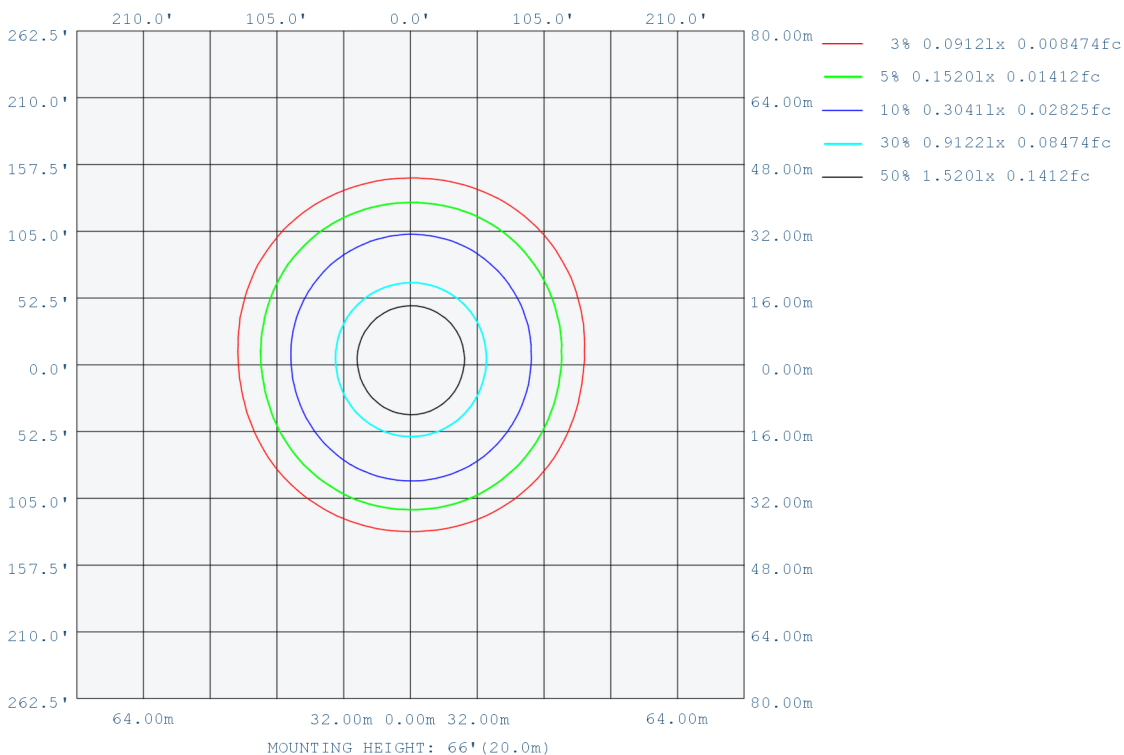
V(B) Range:-90 - 90DEG
V(B) Interval: 2.0DEG
TestSystem:EVERFINEGO-2000B_V1 SYSTEM V2.0.404.7 Humidity:65.0%
TestDistance:8.365m [K=1.0000]
Remarks:

H(□) Range:-90 - 90DEG
H(□) Interval:1.0DEG Test
Speed: HIGH
Temperature:25.3DEG
Operators:Guohong
Test Date:2024-01-02

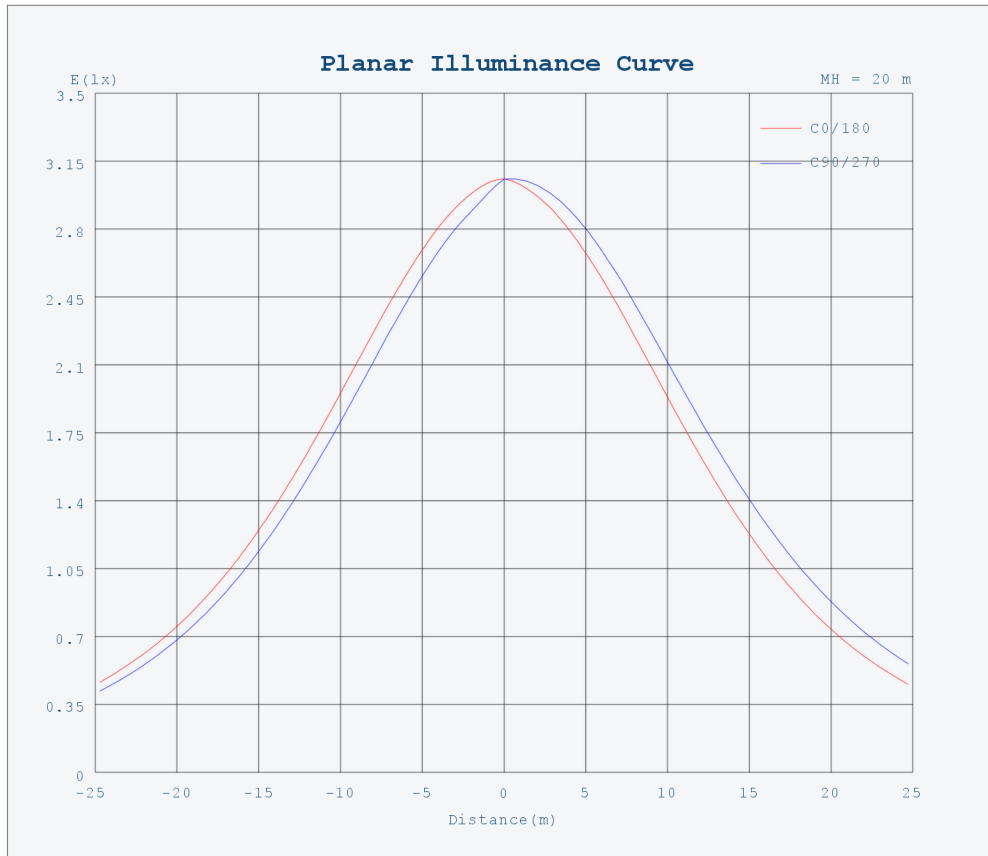
V(B) Range:-90 - 90DEG
V(B) Interval: 2.0DEG
TestSystem:EVERFINEGO-2000B_V1 SYSTEM V2.0.404.7 Humidity:65.0%
TestDistance:8.365m [K=1.0000]
Remarks:

ISOLUX DIAGRAM

Test:U:232.5V I:0.6855A P:155.2W PF:0.974 Freq:49.96Hz Lamp Flux:3568.56x1 lm		
NAME: AF88X160-amber 590nm-clear glass	TYPE:	WEIGHT:
SPEC.:	DIM.:	SERIAL No.:
MFR.:	SUR.:	Shielding Angle:



Planar Illuminance Curve



H(□) Range:-90 - 90DEG
 H(□) Interval:1.0DEG
 Test Speed: HIGH
 Temperature:25.3DEG
 Operators:Guohong
 Test Date:2024-01-02

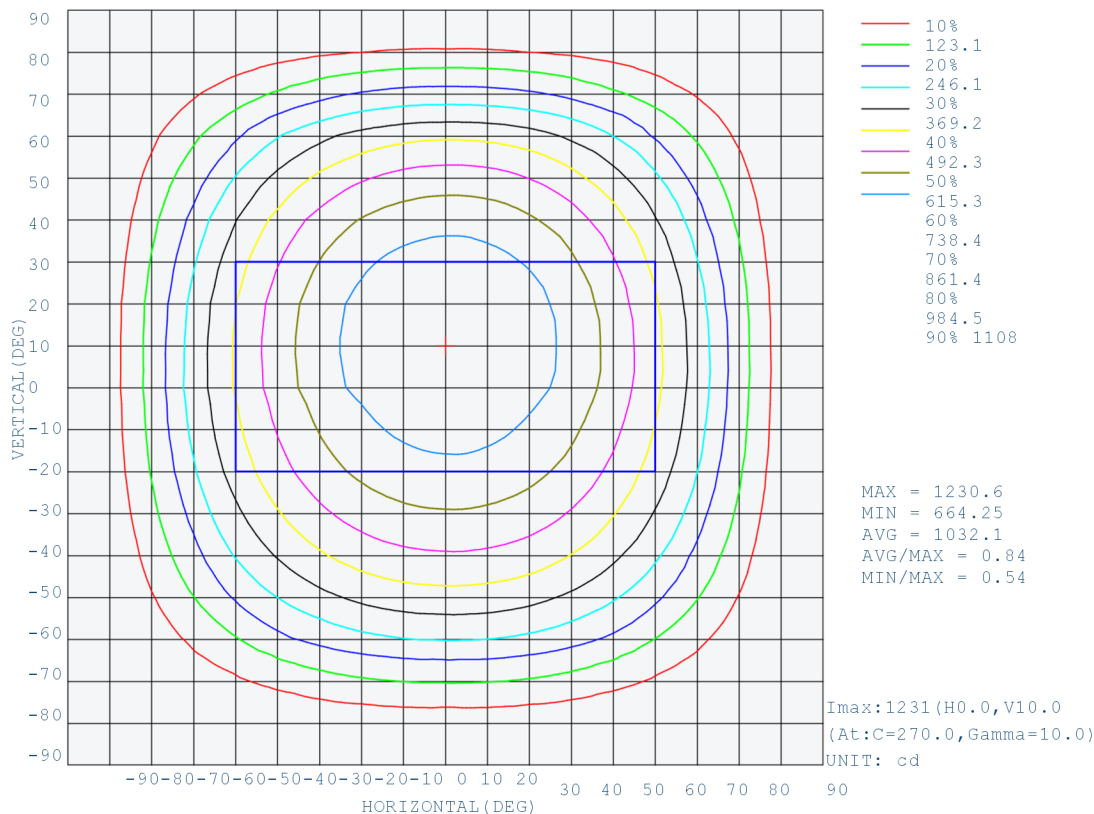
V(B) Range:-90 - 90DEG
 V(B) Interval: 2.0DEG
 TestSystem:EVERFINEGO-2000B_V1 SYSTEM V2.0.404.7
 Humidity:65.0%
 TestDistance:8.365m [K=1.0000]
 Remarks:

H(□) Range:-90 - 90DEG
 H(□) Interval:1.0DEG
 Test Speed: HIGH
 Temperature:25.3DEG
 Operators:Guohong
 Test Date:2024-01-02

V(B) Range:-90 - 90DEG
 V(B) Interval: 2.0DEG
 TestSystem:EVERFINEGO-2000B_V1 SYSTEM V2.0.404.7
 Humidity:65.0%
 TestDistance:8.365m [K=1.0000]
 Remarks:

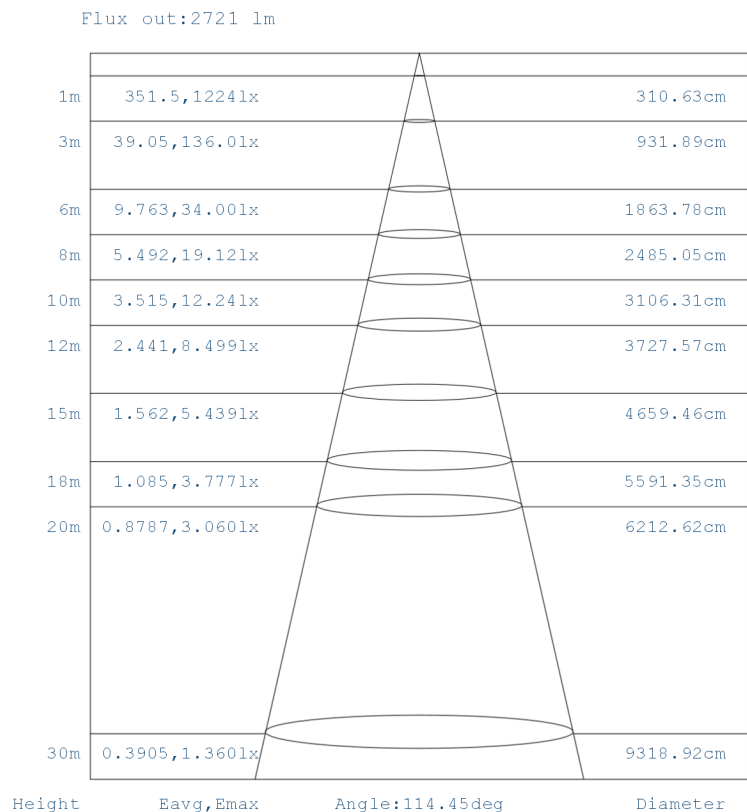
ISOCANDELA DIAGRAM

Test:U:232.5V I:0.6855A P:155.2W PF:0.974 Freq:49.96Hz Lamp Flux:3568.56x1 lm		
NAME: AF88X160-amber 590nm-clear glass	TYPE:	WEIGHT:
SPEC.:	DIM.:	SERIAL No.:
MFR.:	SUR.:	Shielding Angle:



AAI Figure

Test:U:232.5V I:0.6855A P:155.2W PF:0.974 Freq:49.96Hz Lamp Flux:3568.56x1 lm		
NAME: AF88X160-amber 590nm-clear glass	TYPE:	WEIGHT:
SPEC.:	DIM.:	SERIAL No.:
MFR.:	SUR.:	Shielding Angle:



Note: The Curves indicate the illuminated area and the average illumination when the luminaire is at different distance.

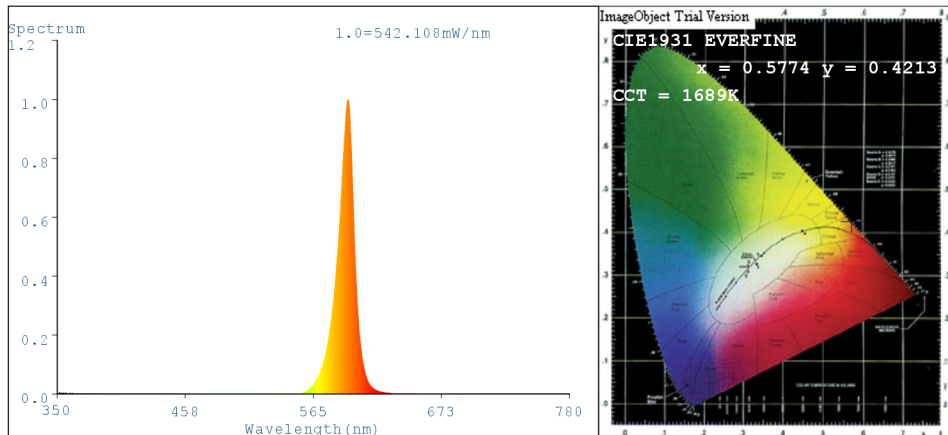
H(□) Range: -90 - 90DEG
H(□) Interval: 1.0DEG
Test Speed: HIGH
Temperature: 25.3DEG
Operators: Guohong
Test Date: 2024-01-02

V(B) Range: -90 - 90DEG
V(B) Interval: 2.0DEG
Test System: EVERFINEGO-2000B_V1 SYSTEM V2.0.404.7
Humidity: 65.0%
Test Distance: 8.365m [K=1.0000]
Remarks:

H(□) Range: -90 - 90DEG
H(□) Interval: 1.0DEG
Test Speed: HIGH
Temperature: 25.3DEG
Operators: Guohong
Test Date: 2024-01-02

V(B) Range: -90 - 90DEG
V(B) Interval: 2.0DEG
Test System: EVERFINEGO-2000B_V1 SYSTEM V2.0.404.7
Humidity: 65.0%
Test Distance: 8.365m [K=1.0000]
Remarks:

SPECTRUM TEST REPORT - UPTA / EPTA 120 590NM AMBER - Clear Glass



Color Parameters:

Chromaticity Coordinate:x=0.5774 y=0.4213/u'=0.3347 v'=0.5495
 CCT=1689K(Duv=0.0058) Dominant WL:Ld =590.5nm Purity=99.8%
 Ratio:R=11.0% G=89.0% B=0.0% Peak WL:Lp=594.0nm FWHM=14.1nm
 Render Index:Ra=11.5 CRI=11.1 AvgR=10.3
 R1=0 R2=46 R3=14 R4=0 R5=0 R6=31 R7=0 R8=0 R9=0 R10=21 R11=0
 R12=0 R13=0 R14=43 R15=0

Photo Parameters:

Flux = 4678 lm Eff. : 37.96 lm/W Fe = 9.368 W

Electrical parameters:

V = 219.57 V I = 0.5713 A P = 123.2 W PF = 0.9825

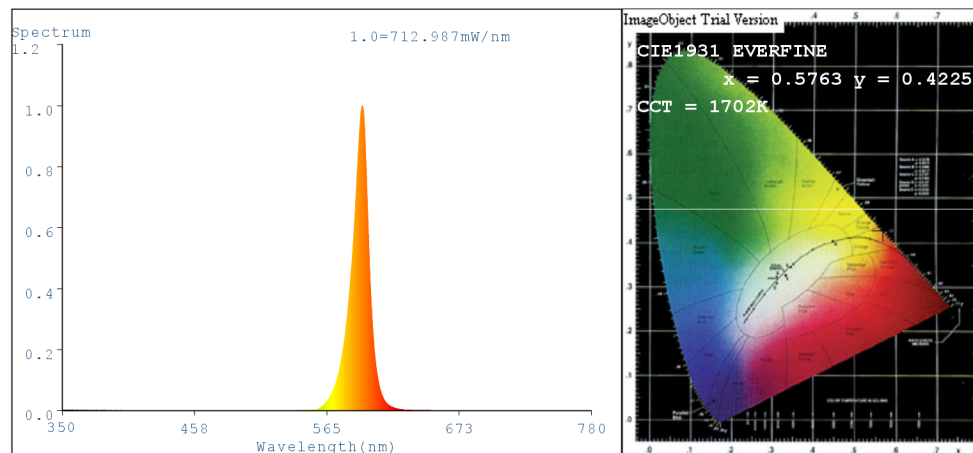
LEVEL:OUT WHITE:OUT

Status: Integral T = 11 ms Ip = 38423 (59%)

Model:LIGHT
 Tester:DAMIN
 Temperature:25.3Deg
 Manufacturer:EVERFINE

Number:1
 Date:2024-01-03 17:05
 Humidity:65.0%
 Remarks:---

SPECTRUM TEST REPORT - UPTA / EPTA 160 590NM AMBER - Clear Glass



Color Parameters:

Chromaticity Coordinate:x=0.5763 y=0.4225/u'=0.3332 v'=0.5497
 CCT=1702K(Duv=0.0060) Dominant WL:Ld =590.3nm Purity=99.8%
 Ratio:R=10.4% G=89.6% B=0.0% Peak WL:Lp=594.0nm FWHM=14.1nm
 Render Index:Ra=11.3 CRI=10.9 AvgR=10.2
 R1=0 R2=46 R3=14 R4=0 R5=0 R6=30 R7=0 R8=0 R9=0 R10=20 R11=0
 R12=0 R13=0 R14=43 R15=0

Photo Parameters:

Flux = 6162 lm Eff. : 38.13 lm/W Fe = 12.29 W

Electrical parameters:

V = 219.38 V I = 0.7452 A P = 161.6 W PF = 0.9885

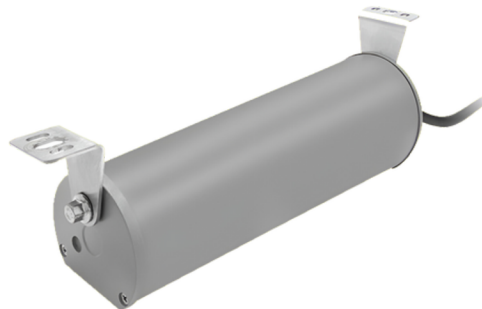
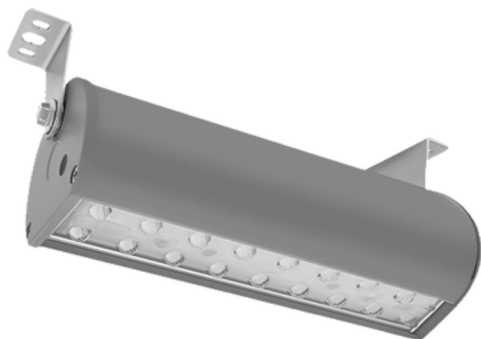
LEVEL:OUT WHITE:OUT

Status: Integral T = 11 ms Ip = 50528 (77%)

Model:LIGHT
 Tester:DAMIN
 Temperature:25.3Deg
 Manufacturer:EVERFINE

Number:1
 Date:2024-01-03 16:58
 Humidity:65.0%
 Remarks:---

UPTA / EPTA 160 590NM AMBER- FIXTURE TEST REPORT - CLEAR POLYCARBONATE LENS



Floodlight Summary:

Report based on lamp delivering 1000 lumens.

Maximum Intensity (Luminaire orientation as tested.) 350.6 cd per klm.
0.0 degrees vertical
0.0 degrees horizontal

Beam Spread At 10% of Imax 155.8V x 154.9H
At 50% of Imax 116.9V x 114.7H
At 90% of Imax 50.2V x 49.4H

Beam Flux Total 999.9 lumens per klm.
To 10% of Imax 985.2 lumens per klm.
To 50% of Imax 778.4 lumens per klm.
To 90% of Imax 194.0 lumens per klm.

Upward LOR 0.0 %
Downward LOR 100.0 %
Luminaire Efficiency(Light Output Ratio) 100.0 %

Light Output Ratio:	100.0%
Luminaire Power:	155.4 W
90% Beam Spread	50.2V x 49.4H
50% Beam Lumens	778.4 lumens per klm.

H(□) Range:-90 - 90DEG
H(□) Interval:1.0DEG Test
Speed: HIGH
Temperature:25.3DEG
Operators:Guohong
Test Date:2023-12-29

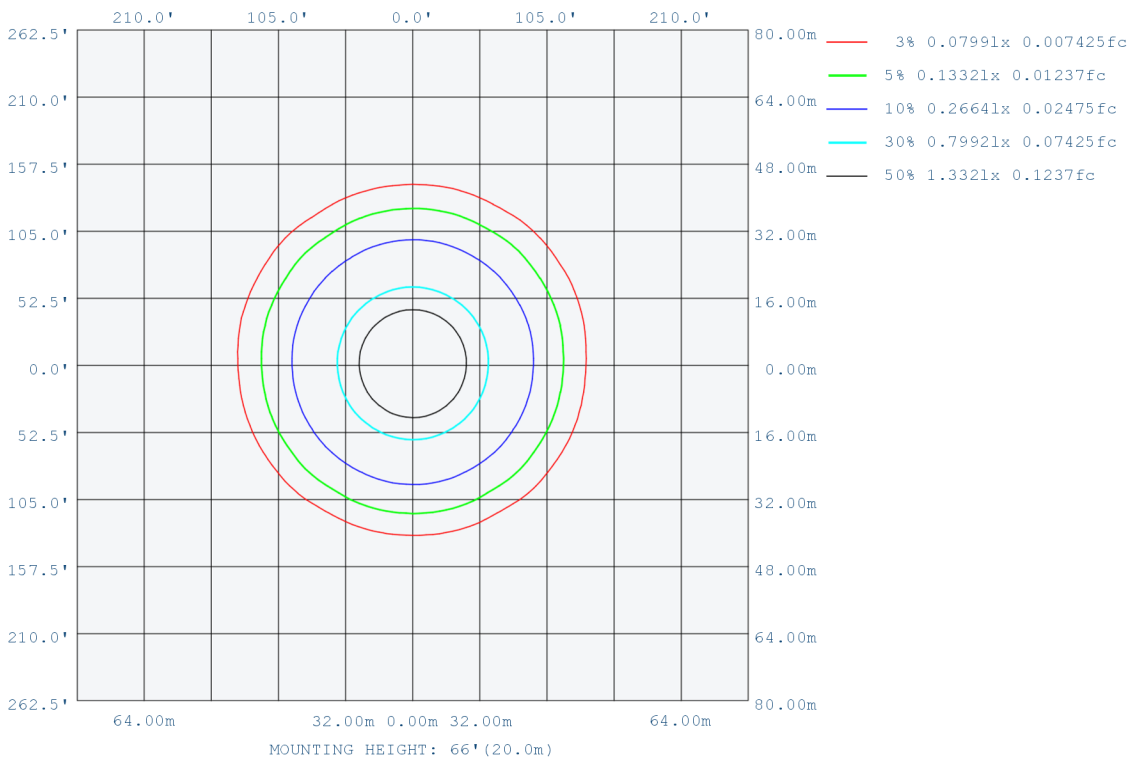
V(B) Range:-90 - 90DEG
V(B) Interval: 2.0DEG
TestSystem:EVERFINEGO-2000B V1 SYSTEM V2.0.404.7 Humidity:65.0%
TestDistance:8.365m [K=1.0000]
Remarks:

H(□) Range:-90 - 90DEG
H(□) Interval:1.0DEG Test
Speed: HIGH
Temperature:25.3DEG
Operators:Guohong
Test Date:2023-12-29

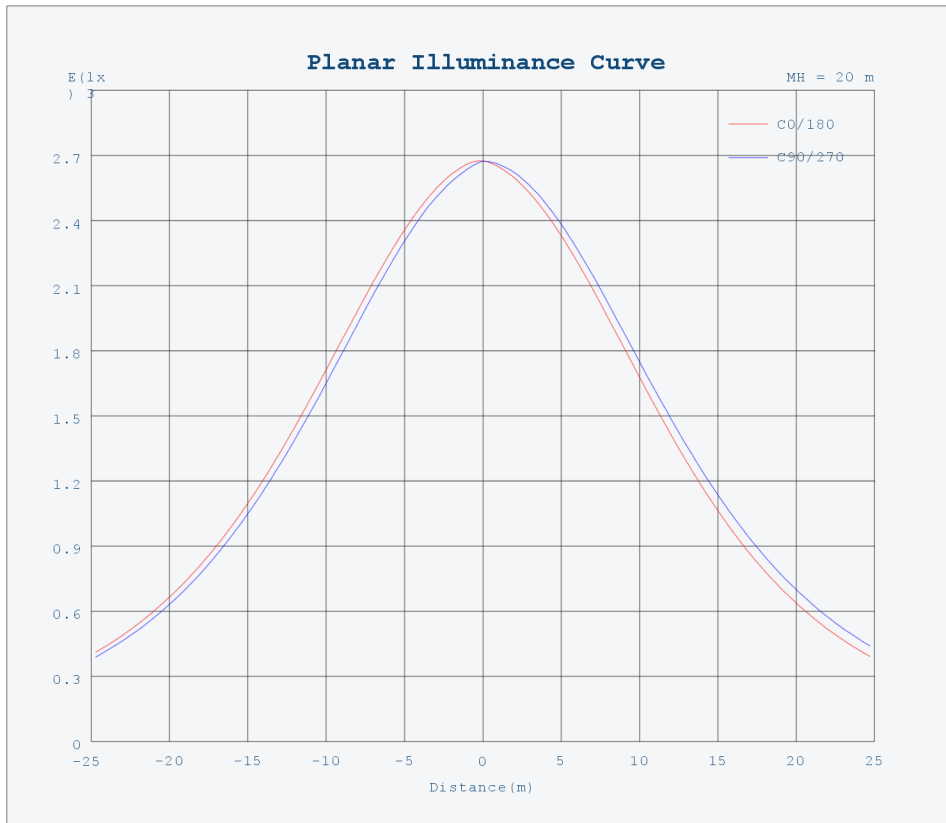
V(B) Range:-90 - 90DEG
V(B) Interval: 2.0DEG
TestSystem:EVERFINEGO-2000B V1 SYSTEM V2.0.404.7 Humidity:65.0%
TestDistance:8.365m [K=1.0000]
Remarks:

ISOLUX DIAGRAM

Test:U:234.7V I:0.6774A P:155.4W PF:0.977 Freq:49.97Hz Lamp Flux:3052.91x1 lm		
NAME: AF88X160-amber 590nm-clear PC	TYPE:	WEIGHT:
SPEC.:	DIM.:	SERIAL No.:
MFR.:	SUR.:	Shielding Angle:



Planar Illuminance Curve



H(□) Range:-90 - 90DEG
H(□) Interval:1.0DEG
Test Speed: HIGH
Temperature:25.3DEG
Operators:Guohong
Test Date:2023-12-29

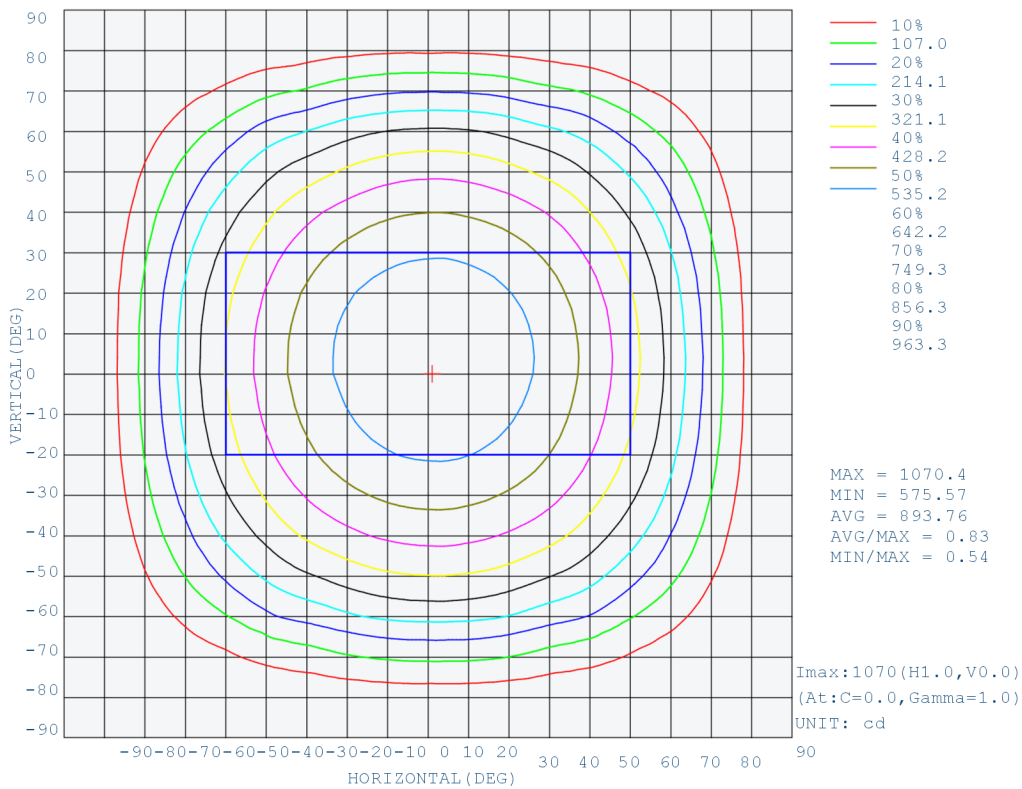
V(B) Range:-90 - 90DEG
V(B) Interval: 2.0DEG
TestSystem:EVERFINEGO-2000B_V1 SYSTEM V2.0.404.7
Humidity:65.0%
TestDistance:8.365m [K=1.0000]
Remarks:

H(□) Range:-90 - 90DEG
H(□) Interval:1.0DEG
Test Speed: HIGH
Temperature:25.3DEG
Operators:Guohong
Test Date:2023-12-29

V(B) Range:-90 - 90DEG
V(B) Interval: 2.0DEG
TestSystem:EVERFINEGO-2000B_V1 SYSTEM V2.0.404.7
Humidity:65.0%
TestDistance:8.365m [K=1.0000]
Remarks:

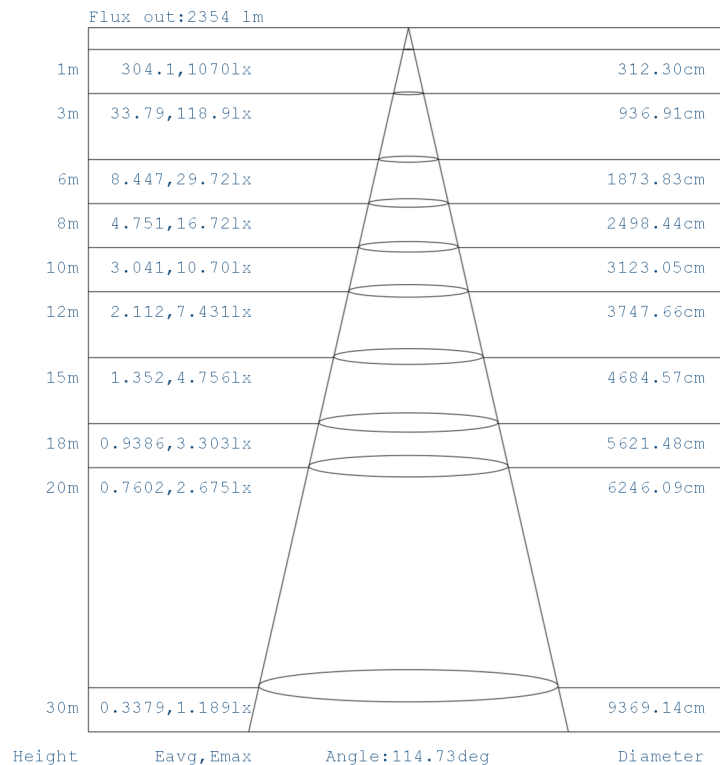
ISOCANDELA DIAGRAM

Test:U:234.7V I:0.6774A P:155.4W PF:0.977 Freq:49.97Hz Lamp Flux:3052.91x1 lm		
NAME: AF88X160-amber 590nm-clear PC	TYPE:	WEIGHT:
SPEC.:	DIM.:	SERIAL No.:
MFR.:	SUR.:	Shielding Angle:



AAI Figure

Test:U:234.7V I:0.6774A P:155.4W PF:0.977 Freq:49.97Hz Lamp Flux:3052.91x1 lm		
NAME: AF88X160-amber 590nm-clear PC	TYPE:	WEIGHT:
SPEC.:	DIM.:	SERIAL No.:
MFR.:	SUR.:	Shielding Angle:



Note: The Curves indicate the illuminated area and the average illumination when the luminaire is at different distance.

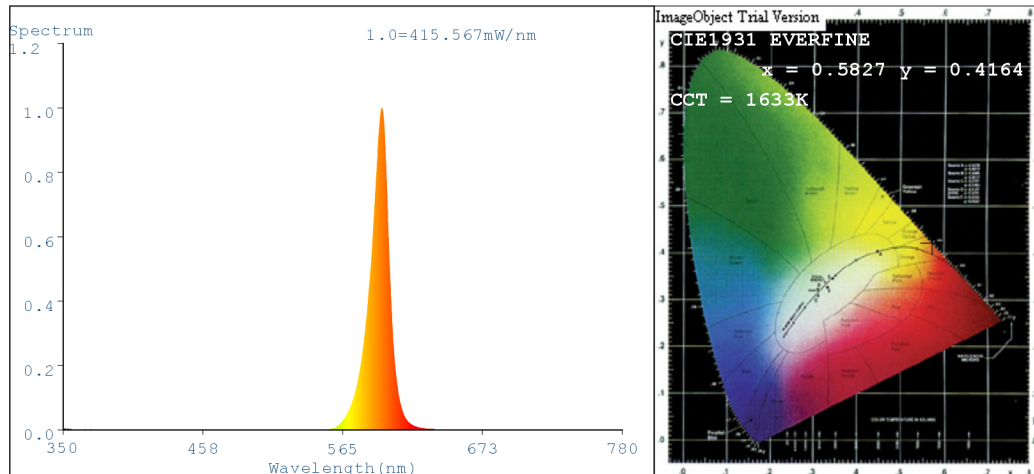
H(□) Range:-90 - 90DEG
H(□) Interval:1.0DEG
Test Speed: HIGH
Temperature:25.3DEG
Operators:Guohong
Test Date:2023-12-29

V(B) Range:-90 - 90DEG
V(B) Interval: 2.0DEG
TestSystem:EVERFINEGO-2000B_V1 SYSTEM V2.0.404.7
Humidity:65.0%
TestDistance:8.365m [K=1.0000]
Remarks:

H(□) Range:-90 - 90DEG
H(□) Interval:1.0DEG
Test Speed: HIGH
Temperature:25.3DEG
Operators:Guohong
Test Date:2023-12-29

V(B) Range:-90 - 90DEG
V(B) Interval: 2.0DEG
TestSystem:EVERFINEGO-2000B_V1 SYSTEM V2.0.404.7
Humidity:65.0%
TestDistance:8.365m [K=1.0000]
Remarks:

**SPECTRUM TEST REPORT - UPTA / EPTA 120 590NM AMBER - CLEAR
POLYCARBONATE LENS**



Color Parameters:

Chromaticity Coordinate:x=0.5827 y=0.4164/u'=0.3412 v'=0.5486
CCT=1633K(Duv=-0.0052) Dominant WL:Ld =591.3nm Purity=99.9%
Ratio:R=14.3% G=85.7% B=0.0% Peak WL:Lp=595.0nm FWHM=14.5nm
Render Index:Ra=11.8 CRI=11.4 AvgR=10.7
R1=0 R2=48 R3=13 R4=0 R5=0 R6=34 R7=0 R8=0 R9=0 R10=23 R11=0
R12=0 R13=0 R14=42 R15=0

Photo Parameters:

Flux = 3608 lm Eff. : 29.48 lm/W Fe = 7.322 W

Electrical parameters:

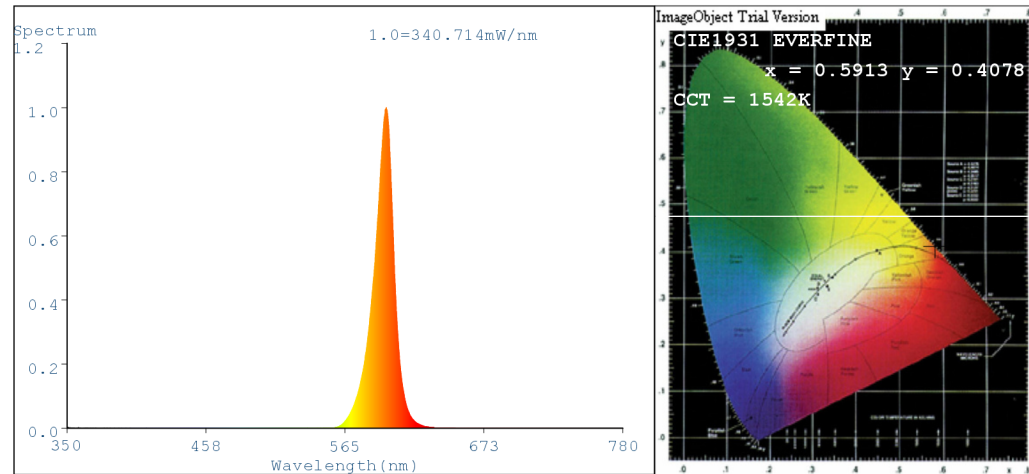
V = 219.71 V I = 0.5671 A P = 122.4 W PF = 0.9822
LEVEL:OUT WHITE:OUT

Status: Integral T = 18 ms Ip = 48250 (74%)

Model:LIGHT
Tester:DAMIN
Temperature:25.3Deg
Manufacturer:EVERFINE

Number:N-00007
Date:2024-01-03 11:33
Humidity:65.0%
Remarks:---

**SPECTRUM TEST REPORT - UPTA / EPTA 160 590NM AMBER - CLEAR
POLYCARBONATE LENS**



Color Parameters:

Chromaticity Coordinate:x=0.5913 y=0.4078/u'=0.3525 v'=0.5469
CCT=1542K(Duv=-0.0041) Dominant WL:Ld =592.9nm Purity=99.9%
Ratio:R=22.3% G=77.7% B=0.0% Peak WL:Lp=597.0nm FWHM=15.8nm
Render Index:Ra=13.1 CRI=12.7 AvgR=11.8
R1=0 R2=51 R3=12 R4=0 R5=0 R6=42 R7=0 R8=0 R9=0 R10=30 R11=0 R12=0
R13=0 R14=42 R15=0

Photo Parameters:

Flux = 3087 lm Eff. : 19.12 lm/W Fe = 6.465 W

Electrical parameters:

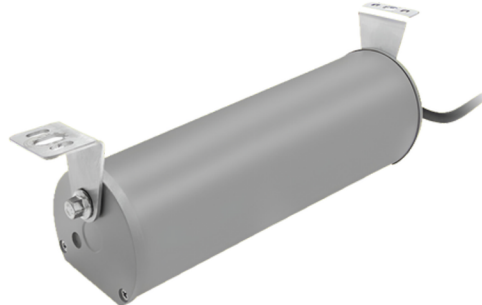
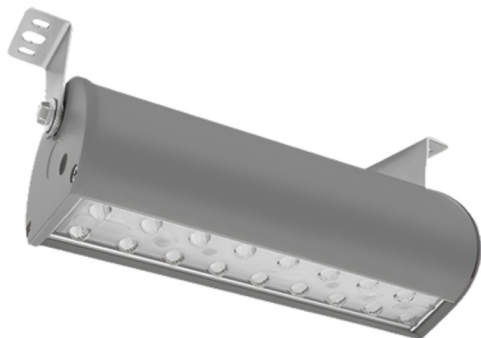
V = 219.68 V I = 0.7436 A P = 161.4 W PF = 0.9883
LEVEL:OUT WHITE:OUT

Status: Integral T = 23 ms Ip = 50776 (77%)

Model:LIGHT
Tester:DAMIN
Temperature:25.3Deg
Manufacturer:EVERFINE

Number:N-00006
Date:2024-01-03 11:31
Humidity:65.0%
Remarks:---

UPTA / EPTA160 590NM AMBER- FIXTURE TEST REPORT - FROSTED POLYCARBONATE LENS



Floodlight Summary:

Report based on lamp delivering 1000 lumens.

Maximum Intensity (Luminaire orientation as tested.) **364.7 cd per klm.**
 0.0 degrees vertical
 0.0 degrees horizontal

Beam Spread

At 10% of Imax	160.8V x 158.9H
At 50% of Imax	110.6V x 107.0H
At 90% of Imax	44.8V x 43.7H

Beam Flux

Total	999.9 lumens per klm.
To 10% of Imax	984.1 lumens per klm.
To 50% of Imax	709.8 lumens per klm.
To 90% of Imax	157.8 lumens per klm.

Upward LOR 0.0 %
Downward LOR 100.0 %

Luminaire Efficiency (Light Output Ratio) 100.0 %

Light Output Ratio:	100.0%
Luminaire Power:	155.5 W
90% Beam Spread	44.8V x 43.7H
50% Beam Lumens	709.8 lumens per klm.

H(□) Range:-90 - 90DEG
 H(□) Interval:1.0DEG Test
 Speed: HIGH
 Temperature:25.3DEG
 Operators:Guohong
 Test Date:2023-12-29

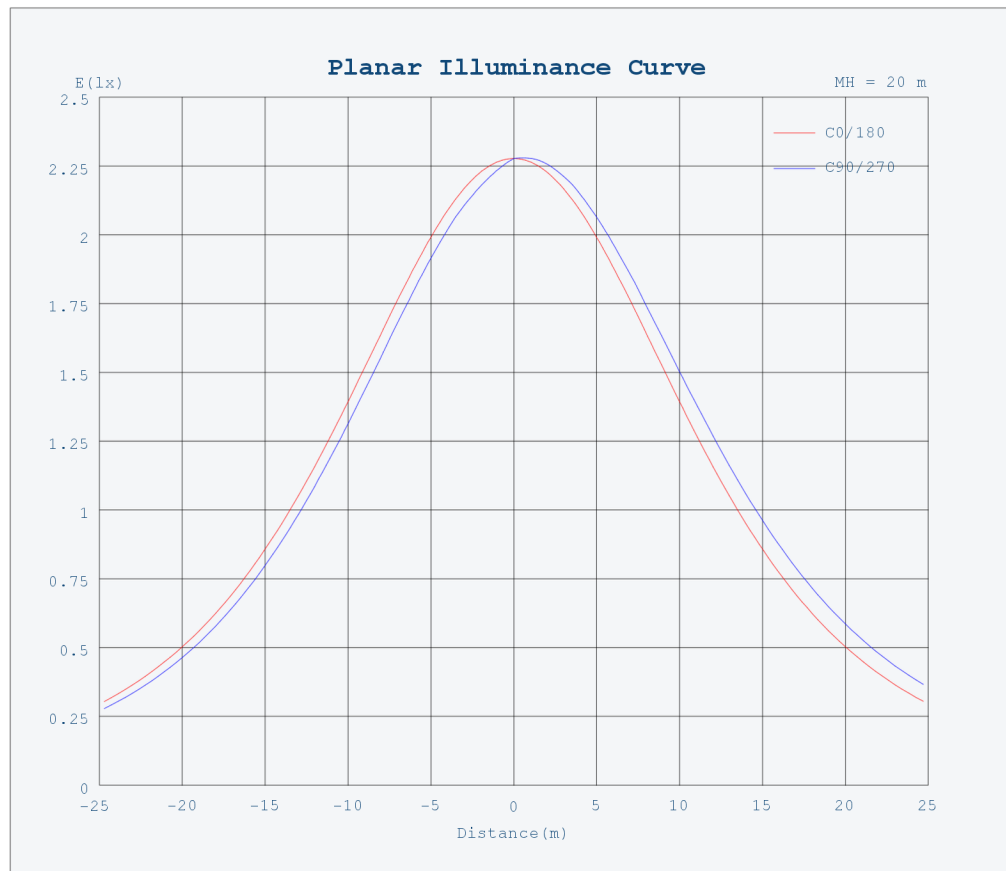
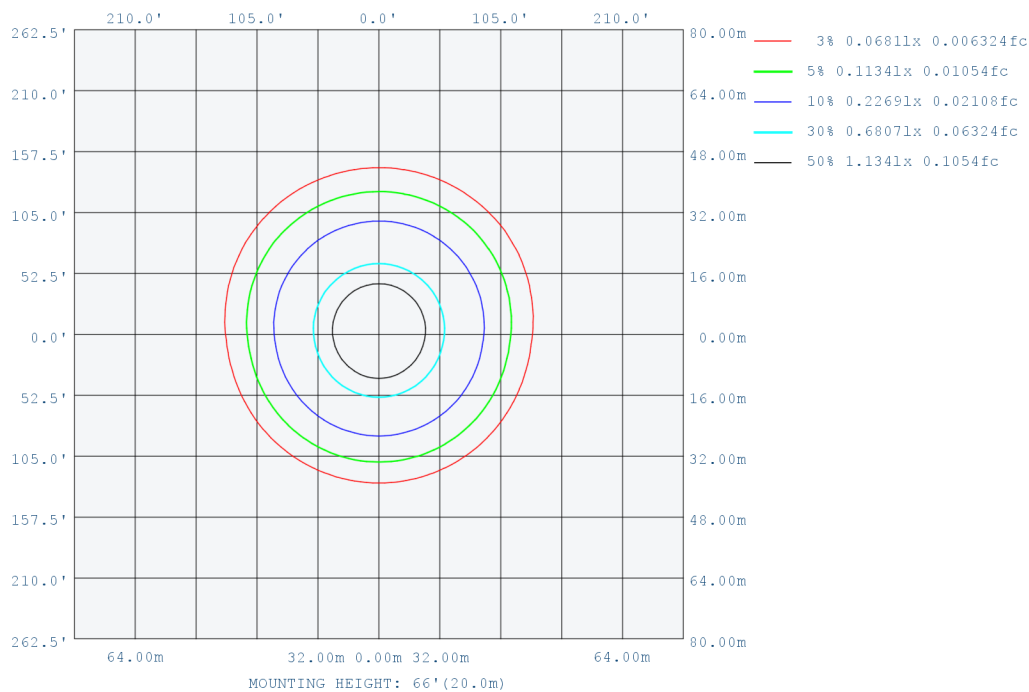
V(B) Range:-90 - 90DEG
 V(B) Interval: 2.0DEG
 TestSystem:EVERFINEGO-2000B_V1 SYSTEM V2.0.404.7 Humidity:65.0%
 TestDistance:8.365m [K=1.0000]
 Remarks:

H(□) Range:-90 - 90DEG
 H(□) Interval:1.0DEG Test
 Speed: HIGH
 Temperature:25.3DEG
 Operators:Guohong
 Test Date:2023-12-29

V(B) Range:-90 - 90DEG
 V(B) Interval: 2.0DEG
 TestSystem:EVERFINEGO-2000B_V1 SYSTEM V2.0.404.7
 Humidity:65.0%
 TestDistance:8.365m [K=1.0000]
 Remarks:

ISOLUX DIAGRAM

Test:U:235.7V I:0.6741A P:155.5W PF:0.979 Freq:49.98Hz Lamp Flux:2513.43x1 lm		
NAME: AF88X160-amber 590nm-frosted PC	TYPE:	WEIGHT:
SPEC.:	DIM.:	SERIAL No.:
MFR.:	SUR.:	Shielding Angle:



H(□) Range:-90 - 90DEG
H(□) Interval:1.0DEG
Test Speed: HIGH
Temperature:25.3DEG
Operators:Guohong
Test Date:2023-12-29

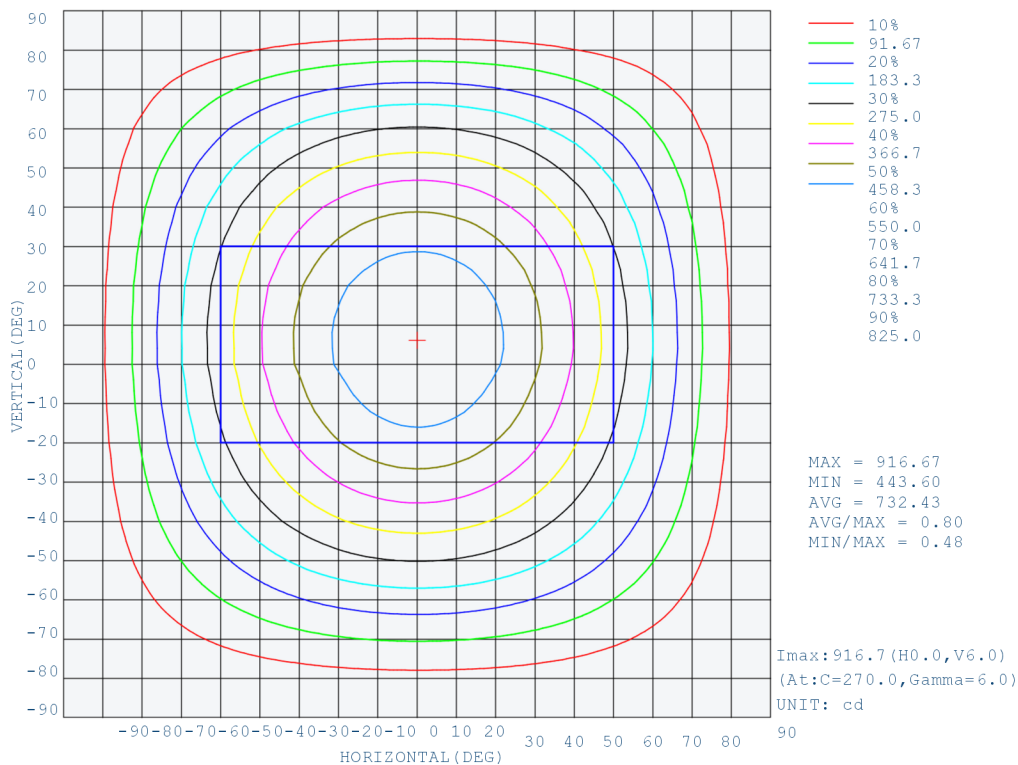
V(B) Range:-90 - 90DEG
V(B) Interval: 2.0DEG
TestSystem:EVERFINEGO-2000B_V1 SYSTEM V2.0.404.7
Humidity:65.0%
TestDistance:8.365m [K=1.0000]
Remarks:

H(□) Range:-90 - 90DEG
H(□) Interval:1.0DEG
Test Speed: HIGH
Temperature:25.3DEG
Operators:Guohong
Test Date:2023-12-29

V(B) Range:-90 - 90DEG
V(B) Interval: 2.0DEG
TestSystem:EVERFINEGO-2000B_V1 SYSTEM V2.0.404.7
Humidity:65.0%
TestDistance:8.365m [K=1.0000]
Remarks:

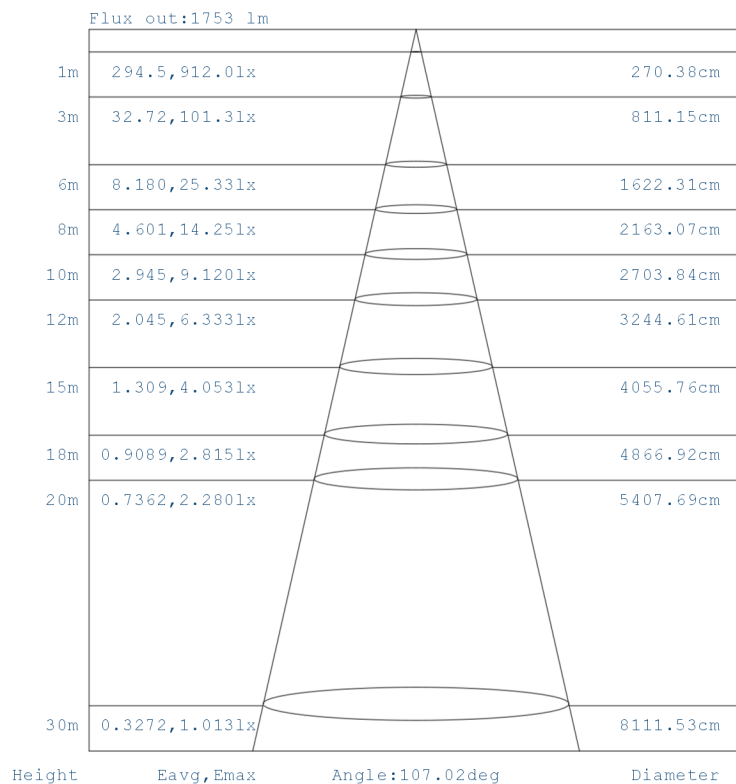
ISOCANDELA DIAGRAM

Test:U:235.7V I:0.6741A P:155.5W PF:0.979 Freq:49.98Hz Lamp Flux:2513.43x1 lm		
NAME: AF88X160-amber 590nm-frosted PC	TYPE:	WEIGHT:
SPEC.:	DIM.:	SERIAL No.:
MFR.:	SUR.:	Shielding Angle:



AAI Figure

Test:U:235.7V I:0.6741A P:155.5W PF:0.979 Freq:49.98Hz Lamp Flux:2513.43x1 lm		
NAME: AF88X160-amber 590nm-frosted PC	TYPE:	WEIGHT:
SPEC.:	DIM.:	SERIAL No.:
MFR.:	SUR.:	Shielding Angle:



Note: The Curves indicate the illuminated area and the average illumination when the luminaire is at different distance.

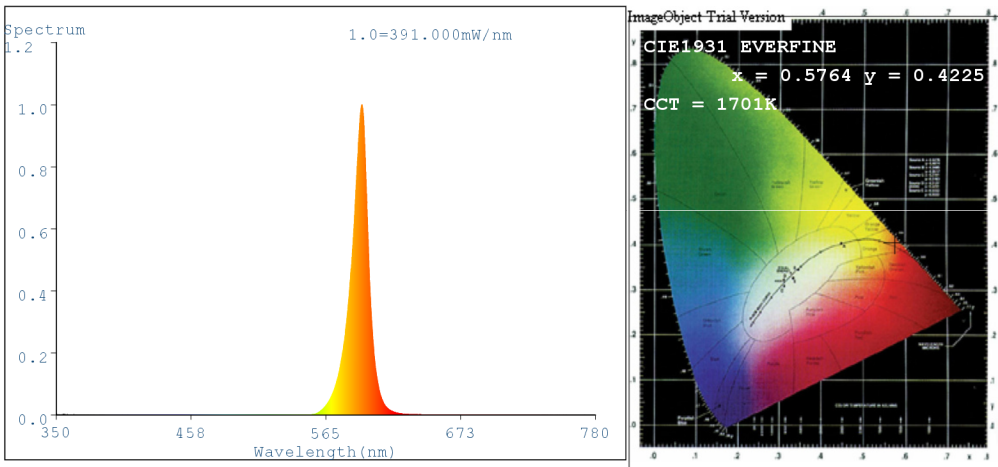
H(□) Range:-90 - 90DEG
H(□) Interval:1.0DEG
Test Speed: HIGH
Temperature:25.3DEG
Operators:Guohong
Test Date:2023-12-29

V(B) Range:-90 - 90DEG
V(B) Interval: 2.0DEG
TestSystem:EVERFINEGO-2000B_V1 SYSTEM V2.0.404.7
Humidity:65.0%
TestDistance:8.365m [K=1.0000]
Remarks:

H(□) Range:-90 - 90DEG
H(□) Interval:1.0DEG
Test Speed: HIGH
Temperature:25.3DEG
Operators:Guohong
Test Date:2023-12-29

V(B) Range:-90 - 90DEG
V(B) Interval: 2.0DEG
TestSystem:EVERFINEGO-2000B_V1 SYSTEM V2.0.404.7
Humidity:65.0%
TestDistance:8.365m [K=1.0000]
Remarks:

SPECTRUM TEST REPORT UPTA / EPTA 120- 590NM AMBER - FROSTED POLYCARBONATE LENS



Color Parameters:

Chromaticity Coordinate: $x=0.5764$ $y=0.4225/u'=0.3333$ $v'=0.5497$
 CCT=1701K(Duv=0.0060) Dominant WL:Ld =590.3nm Purity=99.9%
 Ratio:R=10.3% G=89.7% B=0.0% Peak WL:Lp=593.7nm FWHM=13.8nm
 Render Index:Ra=11.3 CRI=10.9 AvgR=10.1
 R1=0 R2=46 R3=14 R4=0 R5=0 R6=30 R7=0 R8=0 R9=0 R10=19 R11=0
 R12=0 R13=0 R14=43 R15=0

Photo Parameters:

Flux = 3349 lm Eff. : 27.07 lm/W Fe = 6.696 W

Electrical parameters:

V = 219.48 V I = 0.5736 A P = 123.7 W PF = 0.9826

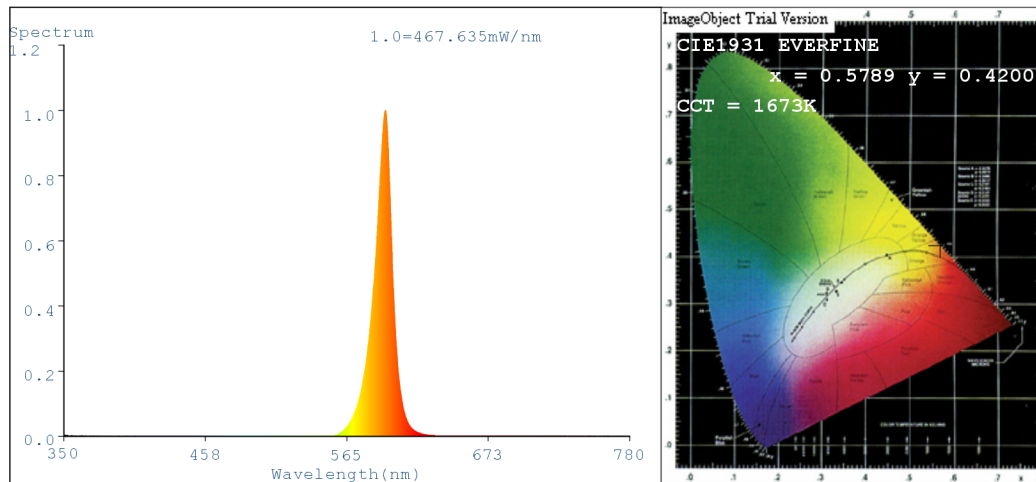
LEVEL:OUT WHITE:OUT

Status: Integral T = 21 ms Ip = 52905 (81%)

Model:LIGHT
 Tester:DAMIN
 Temperature:25.3Deg
 Manufacturer:EVERFINE

Number:1
 Date:2024-01-03 17:11
 Humidity:65.0%
 Remarks:---

SPECTRUM TEST REPORT UPTA / EPTA 160 - 590NM AMBER - FROSTED POLYCARBONATE LENS



Color Parameters:

Chromaticity Coordinate: $x=0.5764$ $y=0.4225/u'=0.3333$ $v'=0.5497$
 CCT=1701K(Duv=0.0060) Dominant WL:Ld =590.3nm Purity=99.9%
 Ratio:R=10.3% G=89.7% B=0.0% Peak WL:Lp=593.7nm FWHM=13.8nm
 Render Index:Ra=11.3 CRI=10.9 AvgR=10.1
 R1=0 R2=46 R3=14 R4=0 R5=0 R6=30 R7=0 R8=0 R9=0 R10=19 R11=0
 R12=0 R13=0 R14=43 R15=0

Photo Parameters:

Flux = 4028 lm Eff. : 25.01 lm/W Fe = 8.119 W

Electrical parameters:

V = 219.64 V I = 0.7420 A P = 161.1 W PF = 0.9884

LEVEL:OUT WHITE:OUT

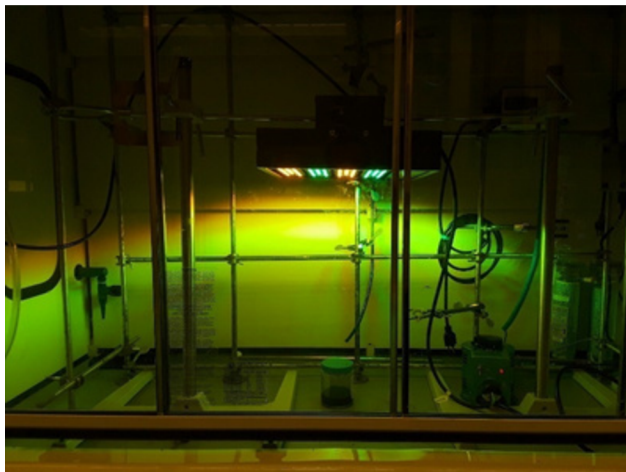
Status: Integral T = 16 ms Ip = 48248 (74%)

Model:LIGHT
 Tester:DAMIN
 Temperature:25.3Deg
 Manufacturer:EVERFINE

Number:2
 Date:2024-01-03 17:14
 Humidity:65.0%
 Remarks:---

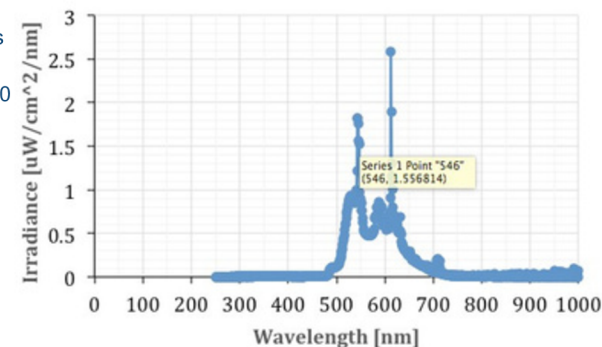
The Fixture's are is independently lab tested and prototypes have been tested by Fortune 500 companies.

The lab of a Fortune 500 company conducted the test. An Access Fixtures No UV LED luminaire equipped with 590nm Amber and Green LEDs was installed in the fume hood of R&D lab. The light wavelength and intensity were measured by spectroradiometer (ILT 950) and light meter (RDI-AR 823) (Fig2). A solution that can be impacted by UV and light under 450nm was placed under the light in the fume hood. The solution was daily inspected visually to see any gel formation caused by LED light.

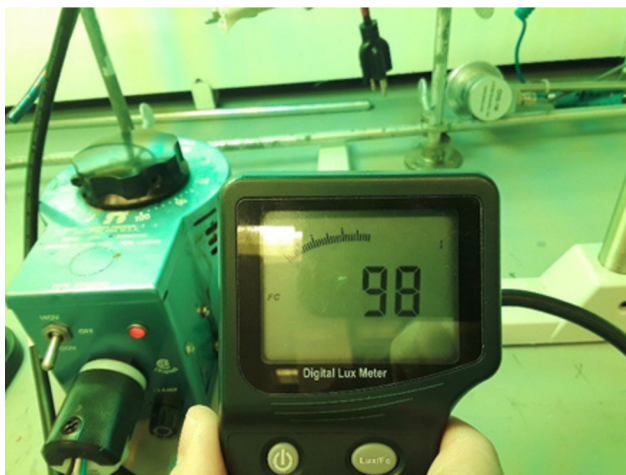


The wavelength of LED light exposed to the solution used in this study using 590nm Amber and Green LEDs ranged from 480 to 710 nm.

As shown in the table below, the sample remained free of gel over the entire 12-day study.



The electric voltage was controlled by a voltage controller and was set to 20% so that the LED light intensity would register 98fc on the light meter. The test was at a much higher footcandle level than their typical production facility targets of 40-70 fc.



The study confirmed that the wavelength of LED light used for solution gel formation ranged from 480 to 710 nm and no gel formation or change in appearance was observed visually at 98 fc light intensity, suggesting that the Access Fixtures LED light fixtures used with a target, 40-70 fc would have no impact on production.

Date inspected	Observation	Exposure time
4/25/2018	started	0 day
4/26/2018	No gel	1 day
4/27/2018	No gel	2 days
4/30/2018	No gel	5 days
5/7/2018	No gel	12 days